



Model designed from the rocket pictured on the 1950 Oldsmobile Super 88 "The Rocket" Brochure.

Instructions

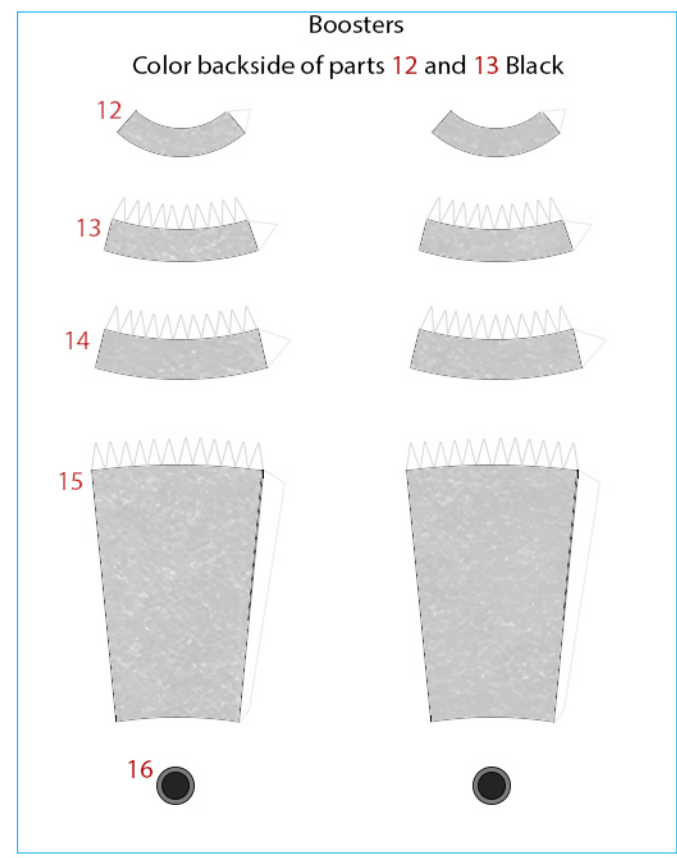
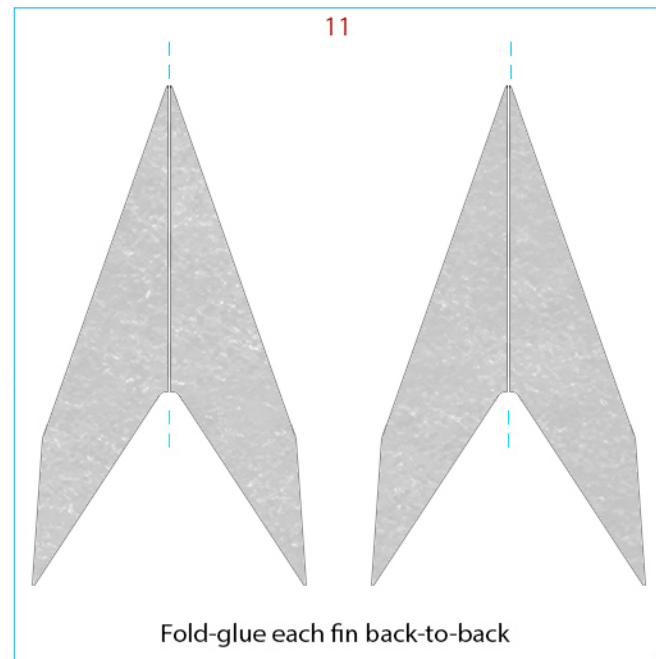
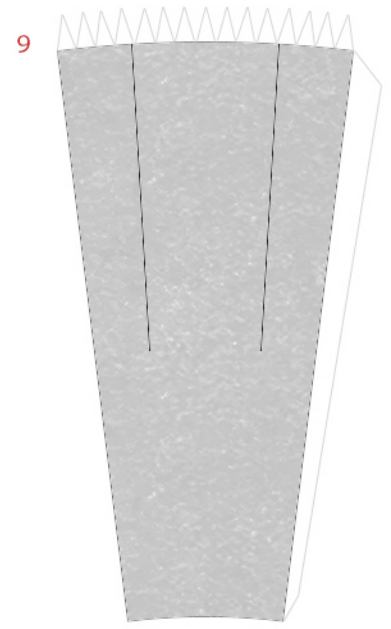
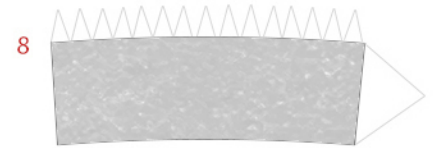
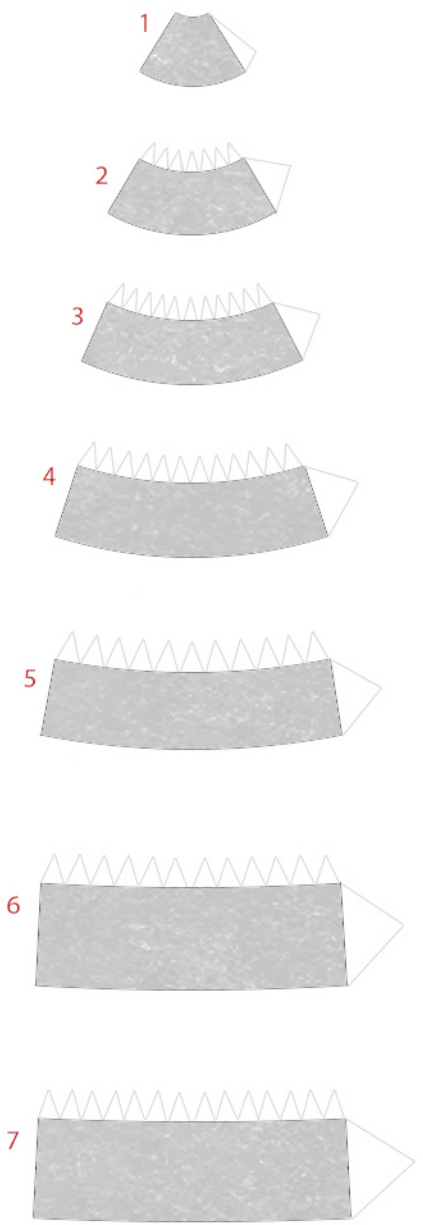


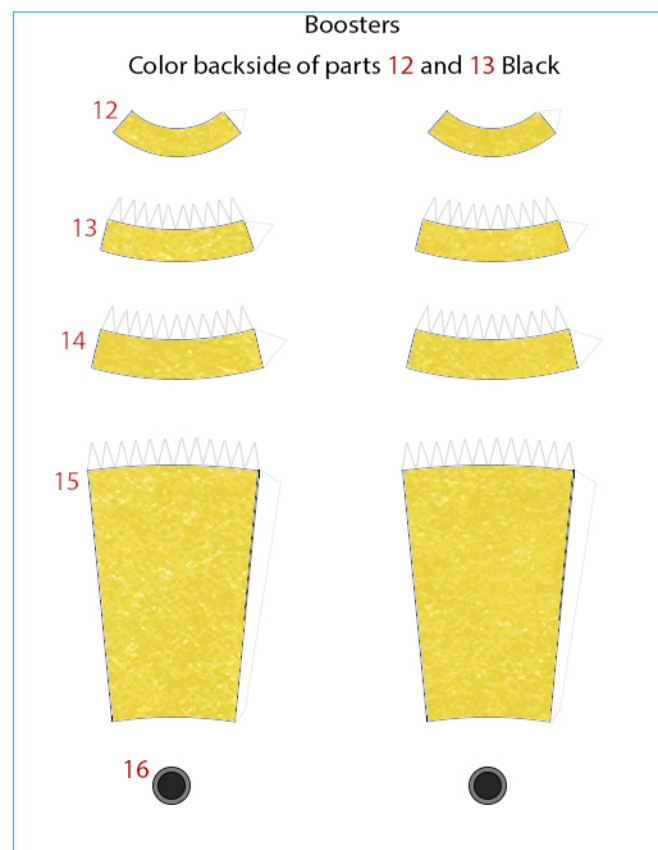
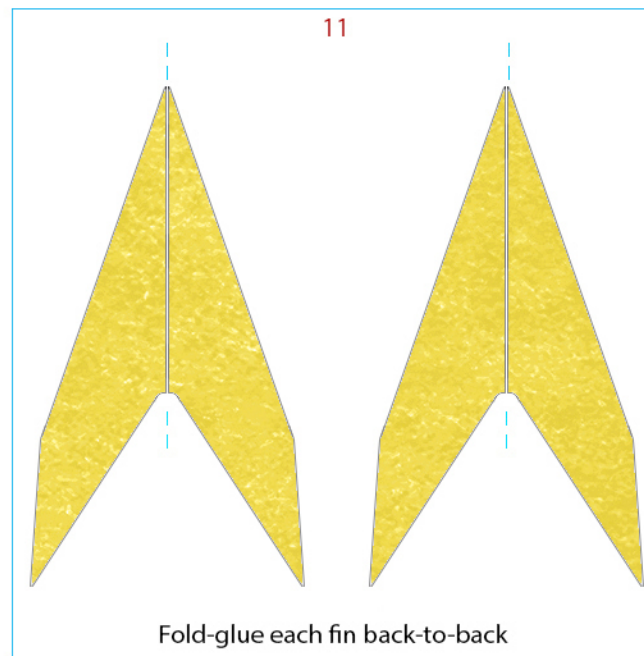
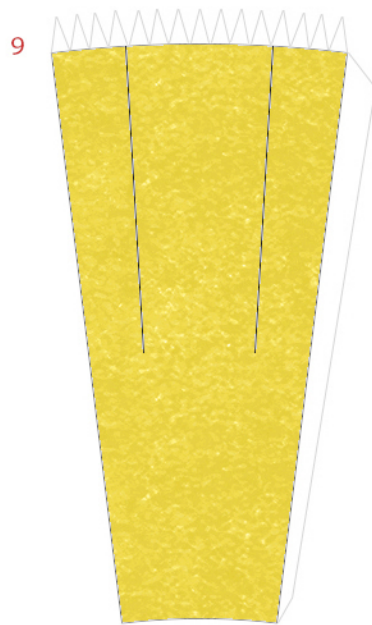
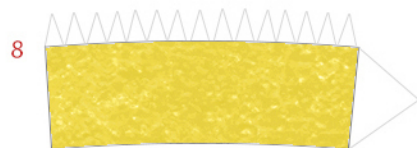
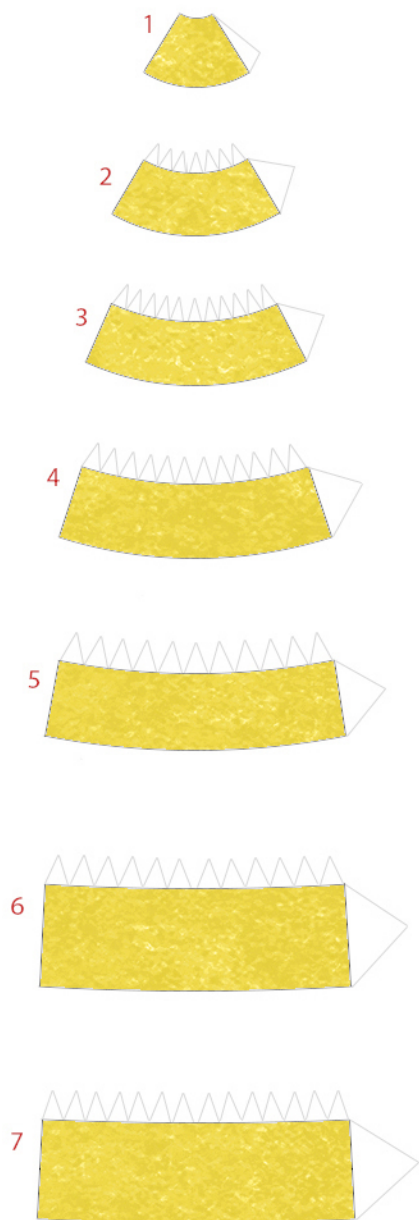
Keep All Seams aligned

Glue 8 to the bottom of part 7

Glue the fins (9) on the four lines on part 7.

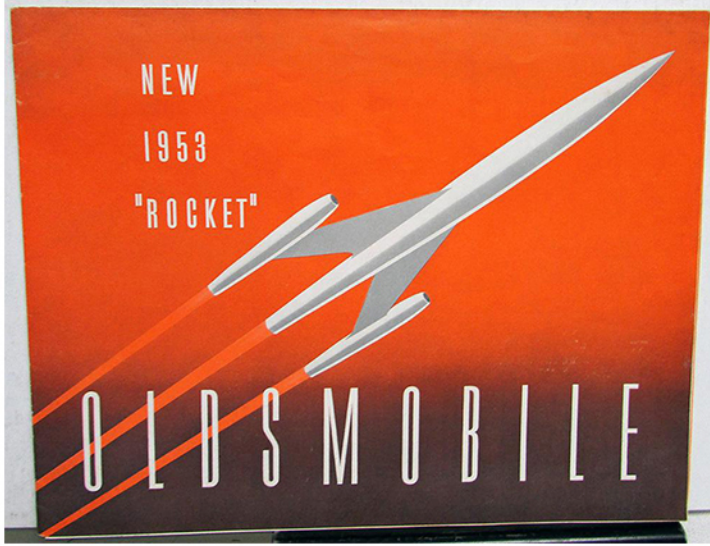






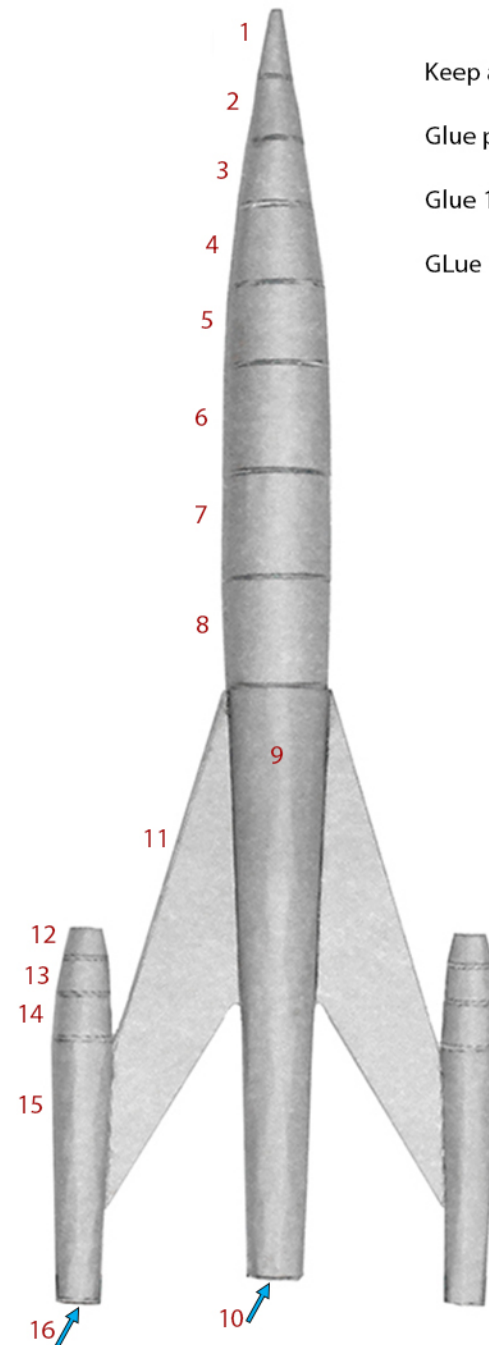


Instructions



Found two brochures showing the rocket symbol for Oldsmobile in two different colors, a model was designed for each one.

1953 Oldsmobile Super 88 Deluxe "Rocket" Brochure



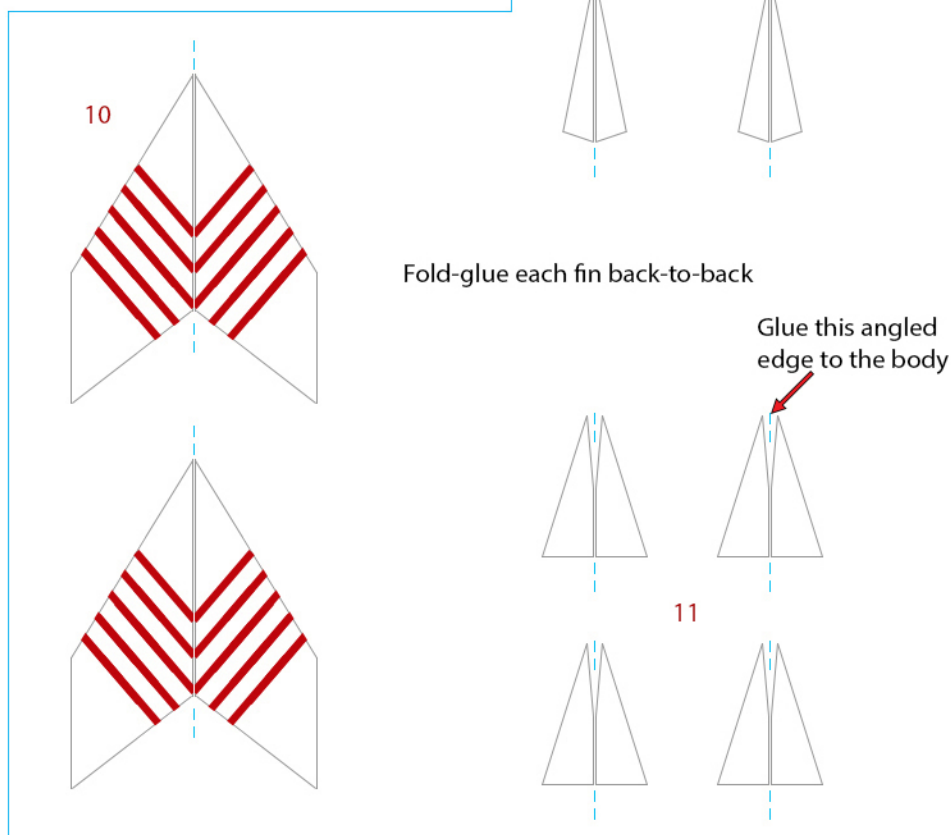
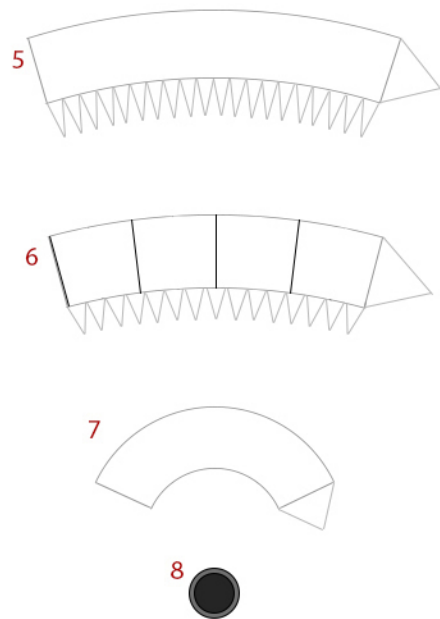
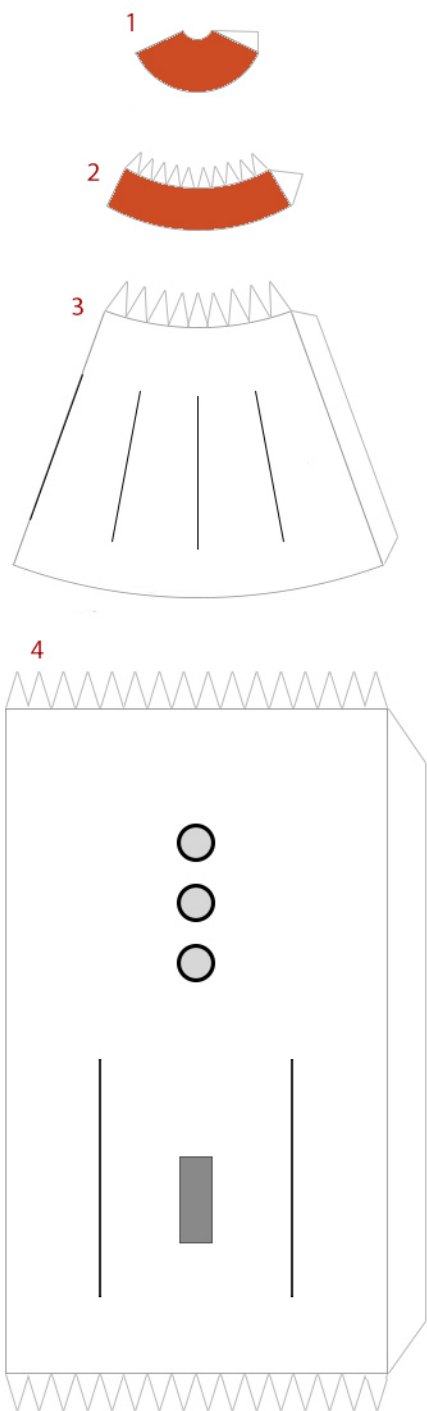
Keep all seams aligned.

Glue parts 11 onto the black lines on 9

Glue 10 onto the bottom of 9

Glue 16 onto the bottom of the boosters (12-15)

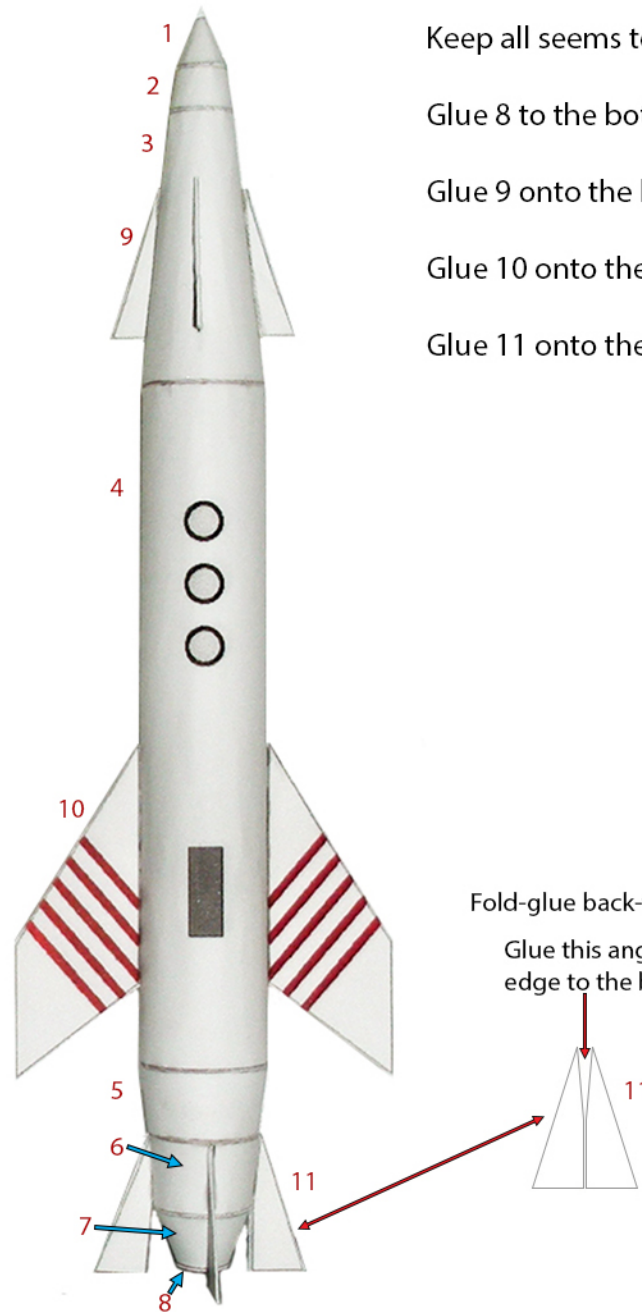
# Retro Rocket Ship 39



# Retro Rocket Ship 39



## Instructions



Keep all seams together

Glue 8 to the bottom of 7

Glue 9 onto the black lines on 3

Glue 10 onto the black lines on 4

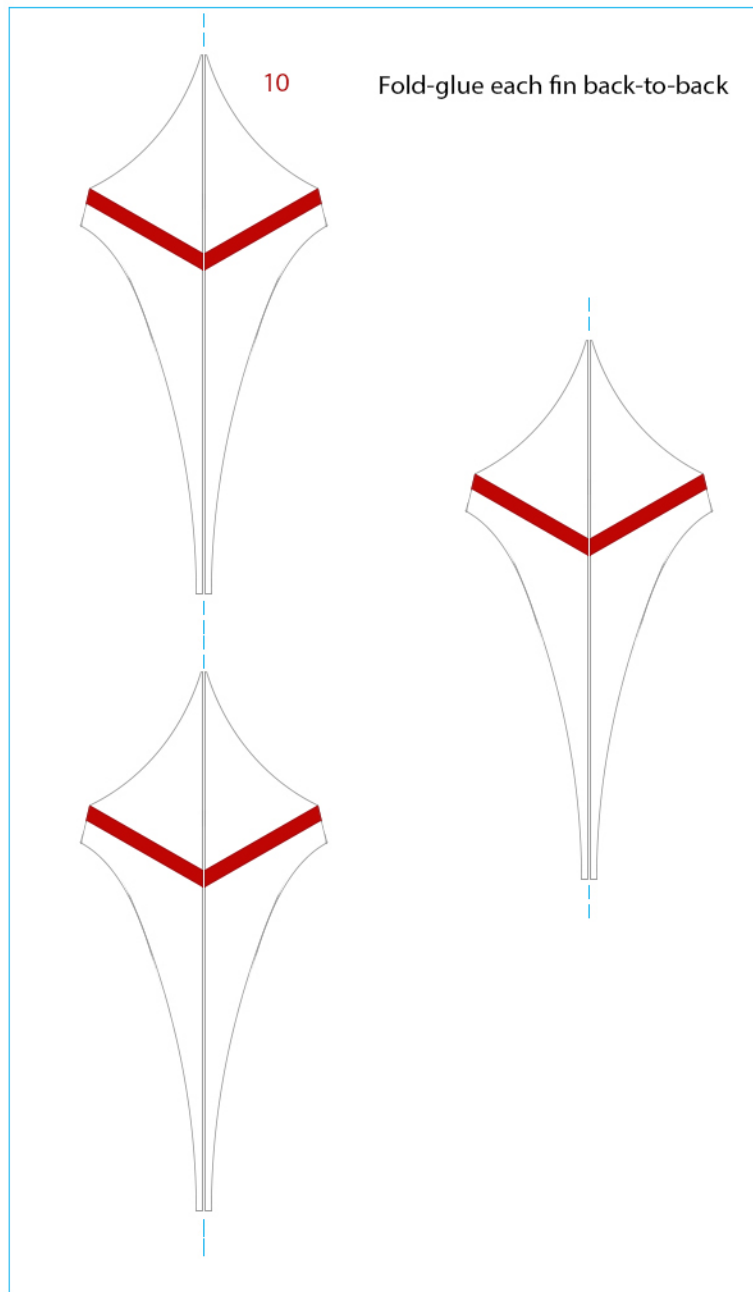
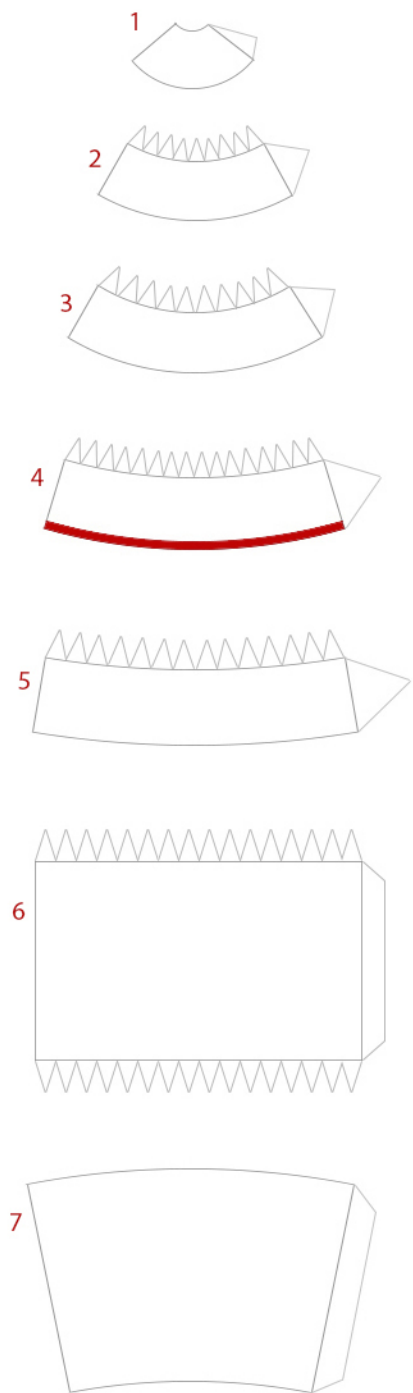
Glue 11 onto the black lines on 6

Fold-glue back-to-back

Glue this angled edge to the body



# Retro Rocket Ship 40

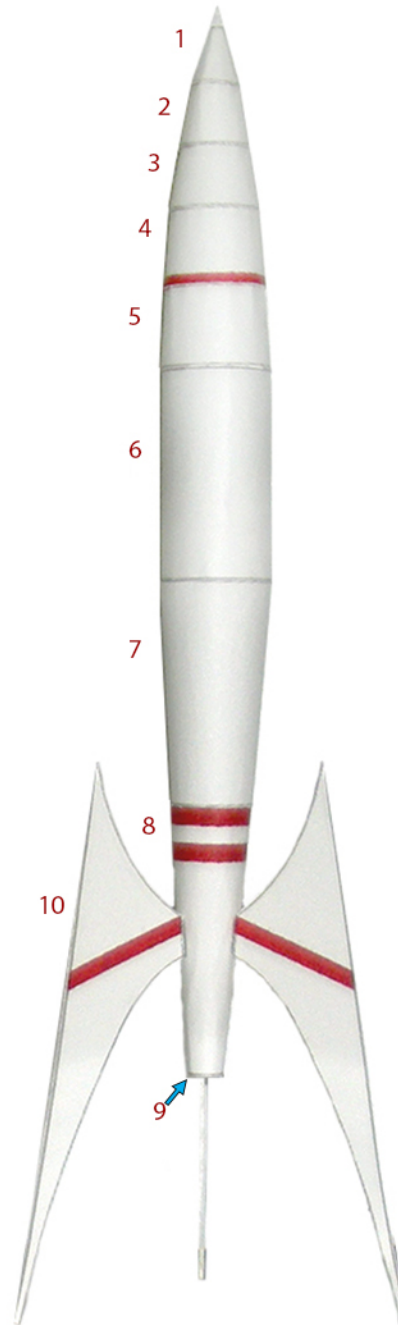




# Retro Rocket Ship 40



## Instructions



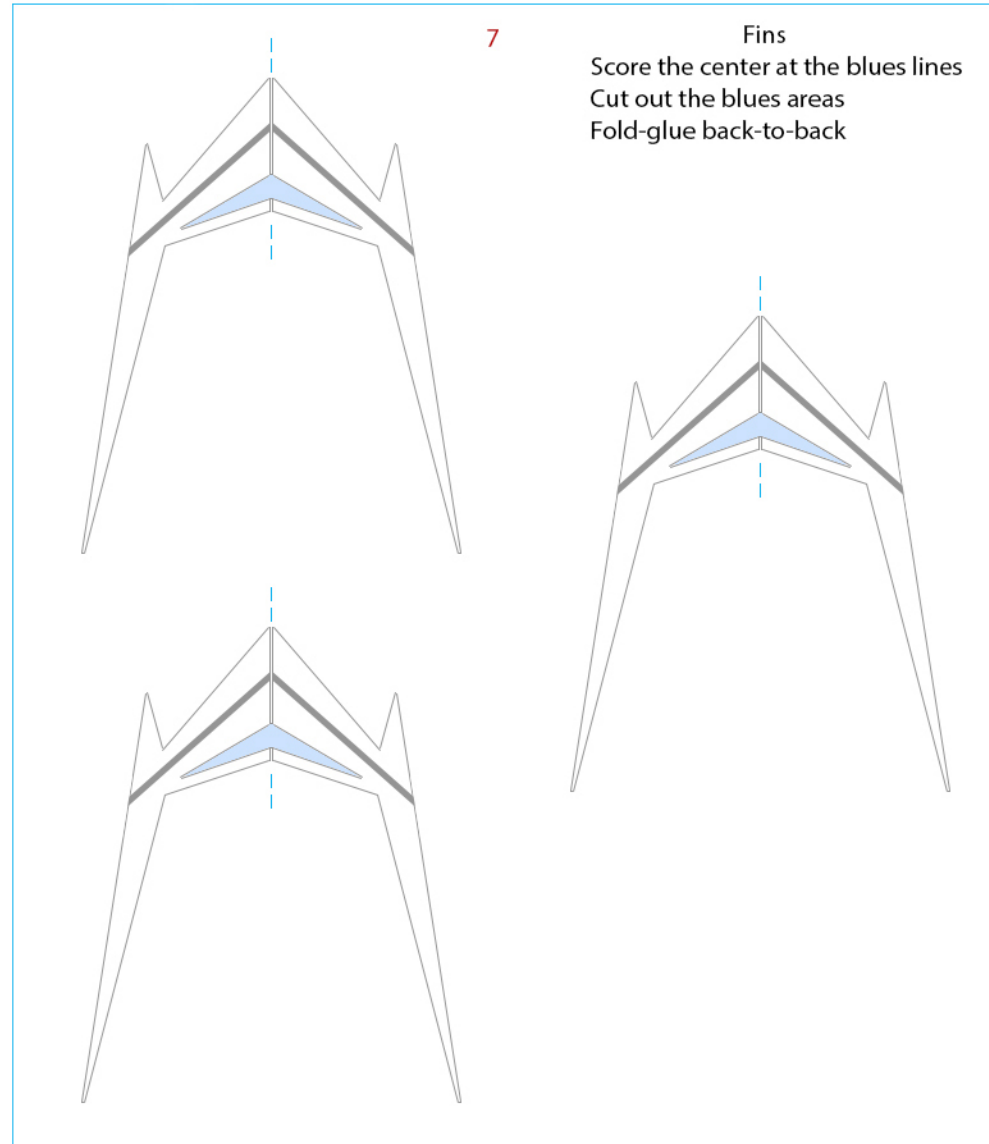
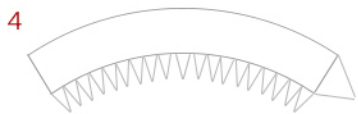
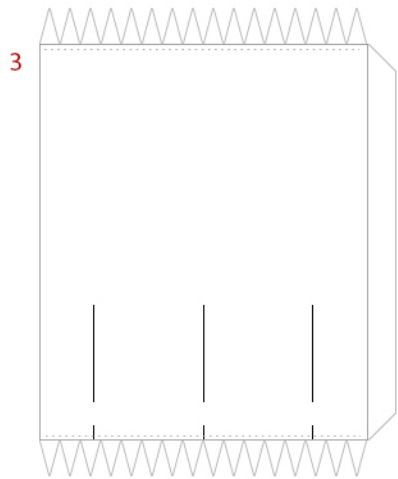
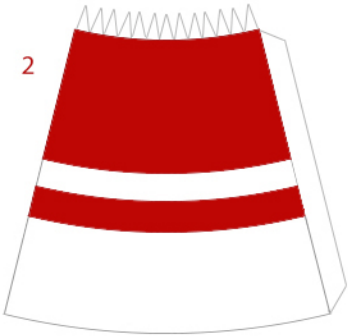
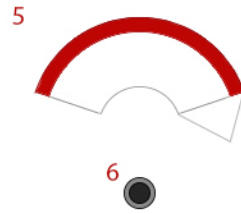
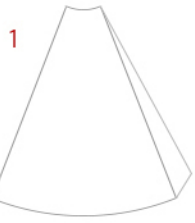
Keep all seems together

Glue 9 onto the bottom of 8

Glue the fins (Parts 10) onto the black lines on 8



# Retro Rocket Ship 41



# Retro Rocket Ship 41



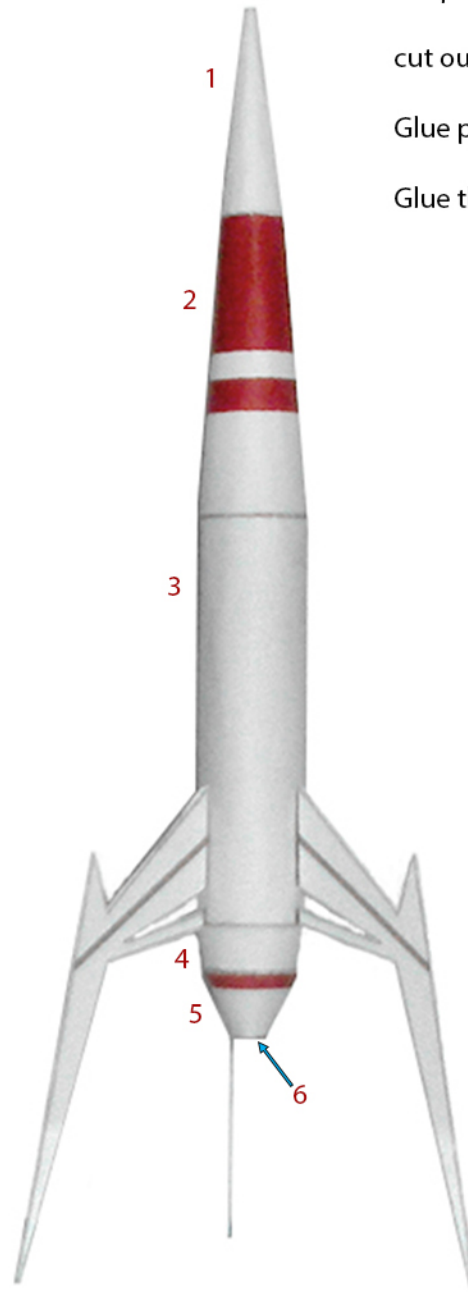
## Instructions

Keep all seams together

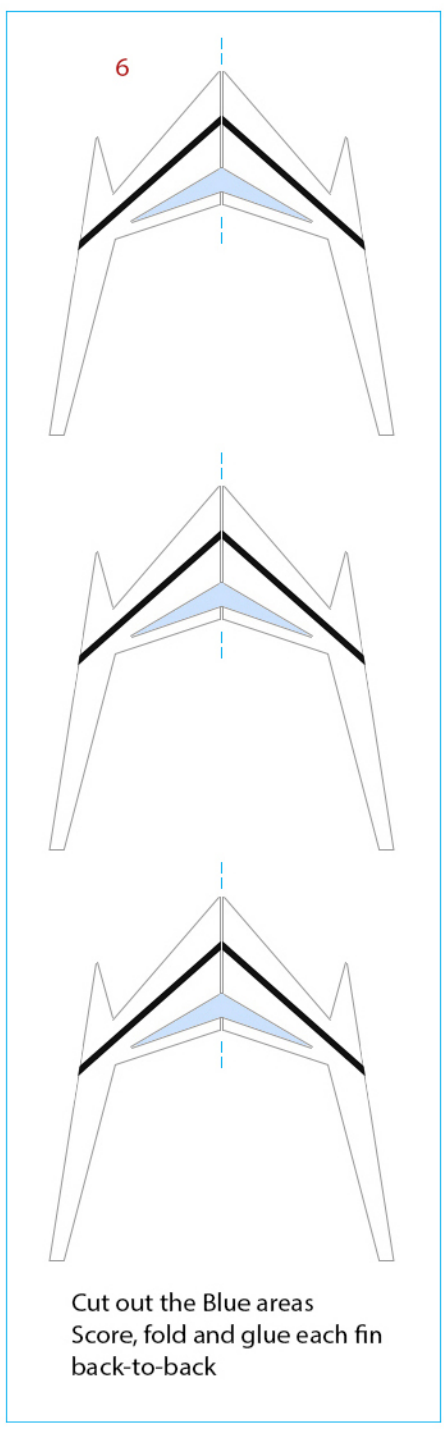
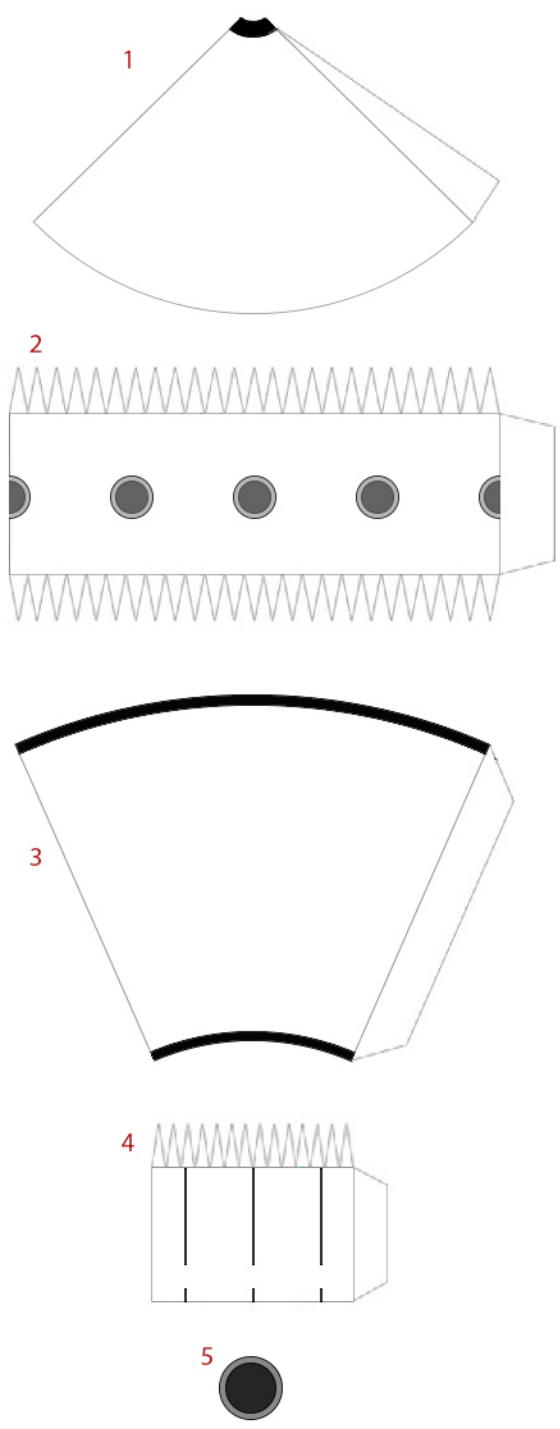
cut out the blue areas from the fins (Parts7)

Glue part 6 to the bottom of Part 5

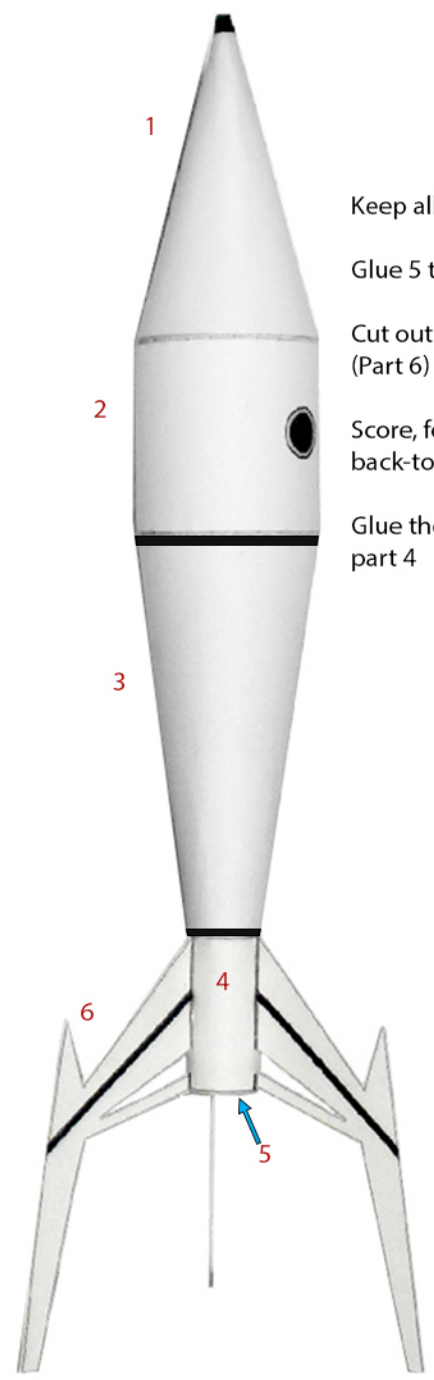
Glue the fins onto the black lines on 3



# Retro Rocket Ship 42



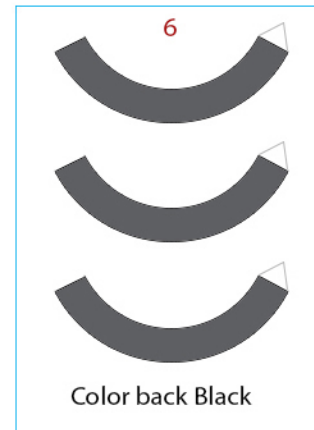
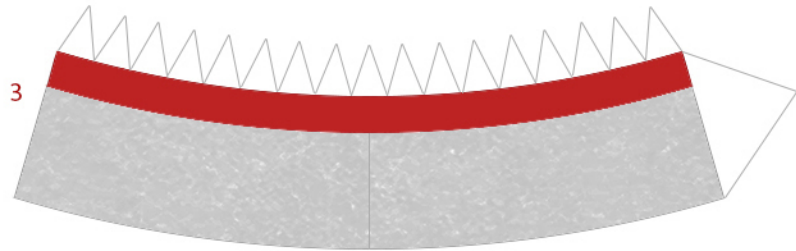
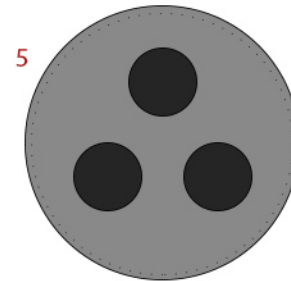
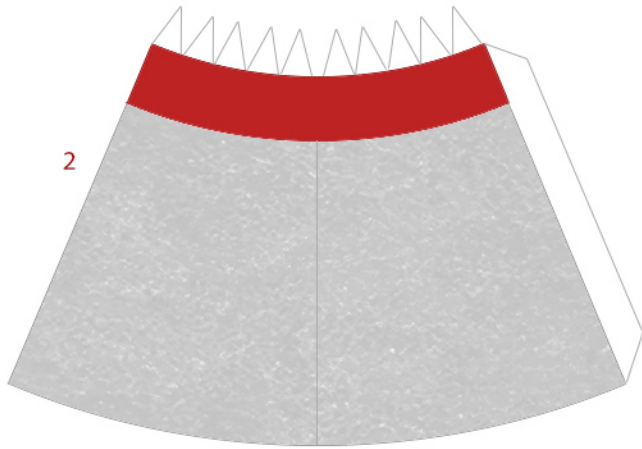
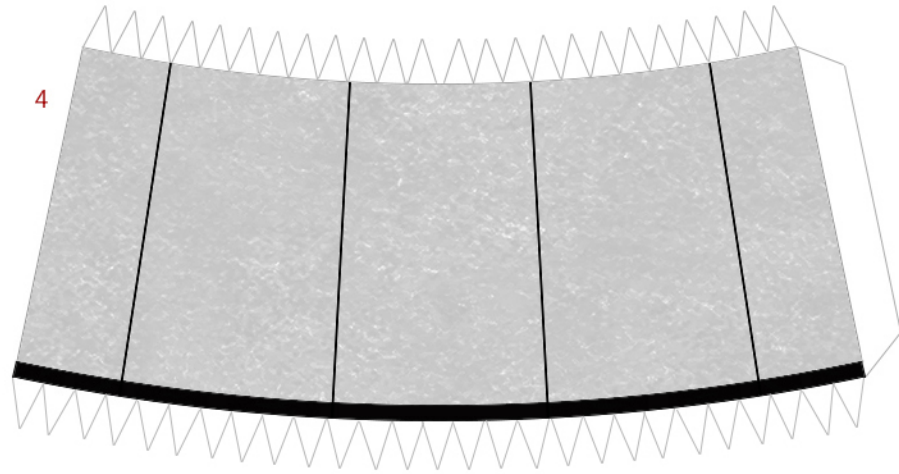
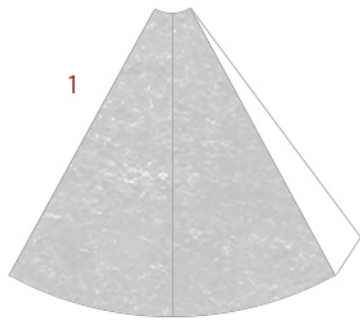
## Instructions



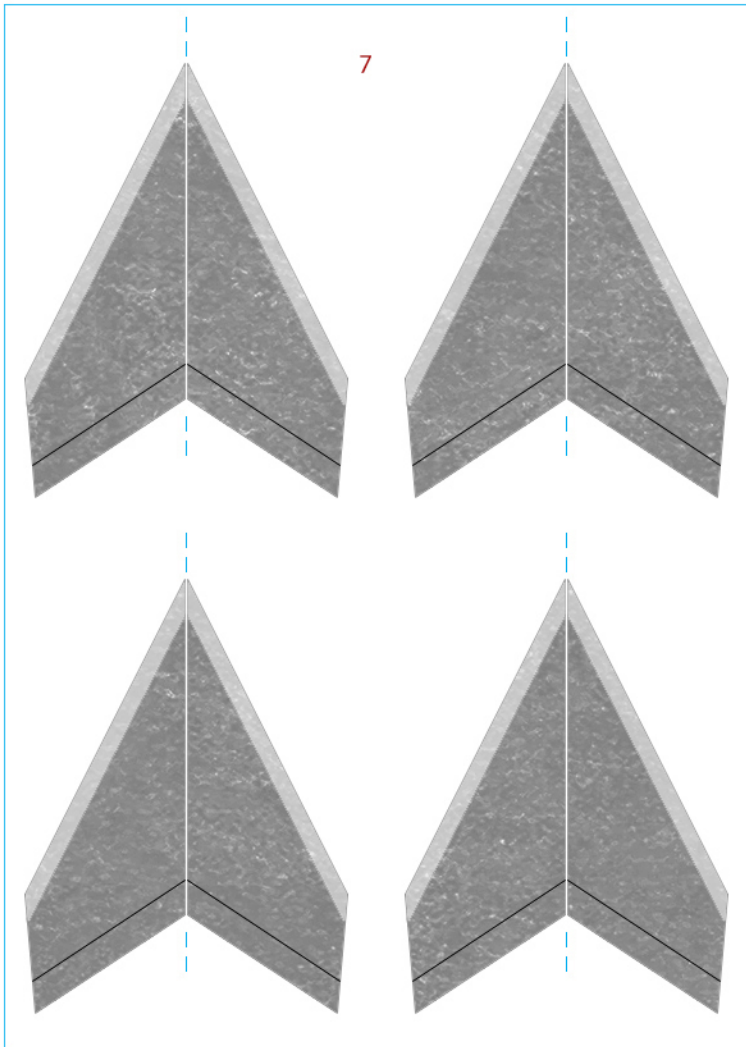
- Keep all seems together
- Glue 5 to the bottom of 4
- Cut out the Blue areas on the fins (Part 6)
- Score, fold-glue the fins back-to-back
- Glue them onto the black lines on part 4



# Retro Rocket Ship 43



# Retro Rocket Ship 43



# Instructions

Keep all seems together

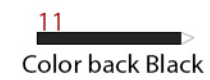
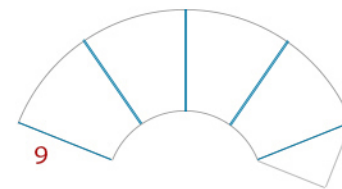
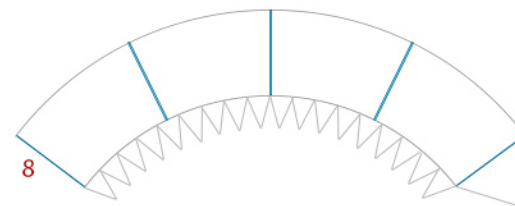
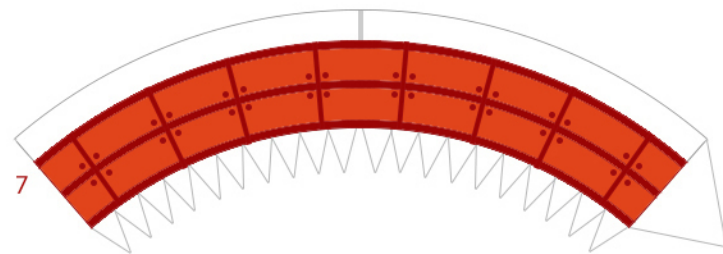
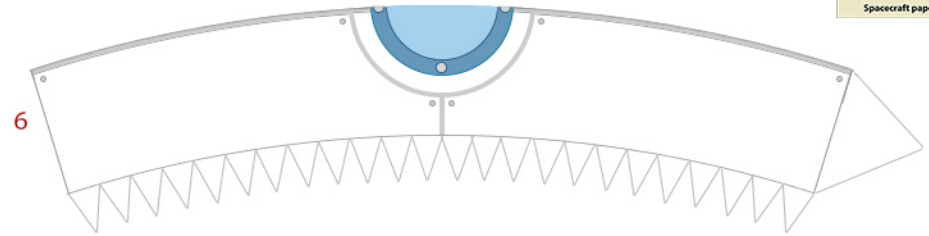
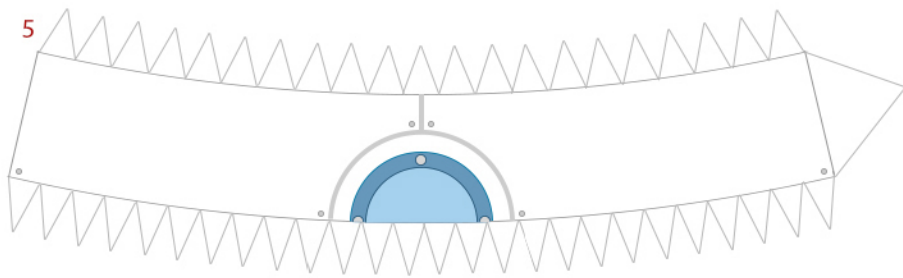
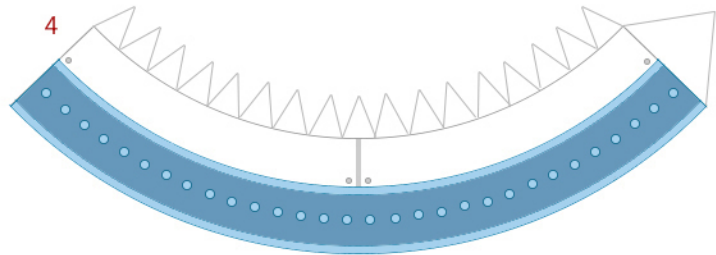
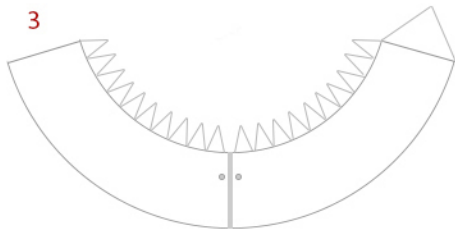
Glue Part 5 to the bottom of 4

Glue 6 onto the bottom of Part 5

Score, fold-glue the fins (Part 7) back-to-back and glue onto the black lines on part 4

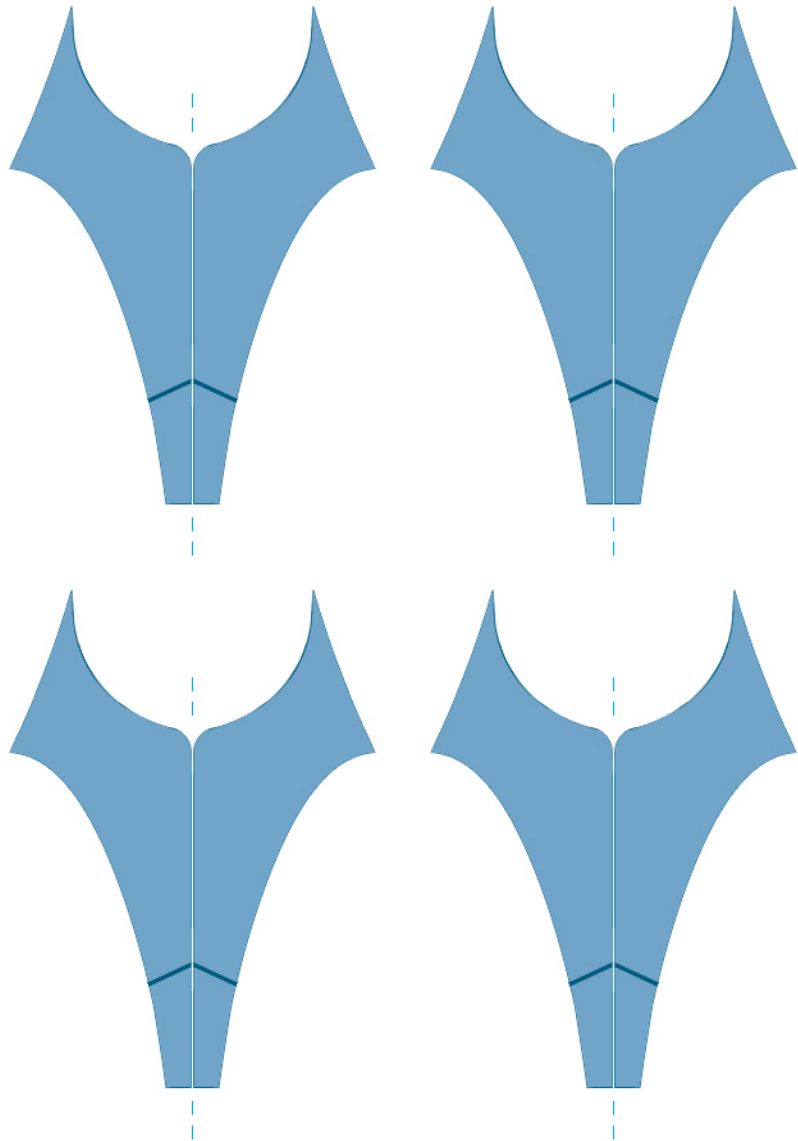


# Retro Rocket Ship 44



# Retro Rocket Ship 44

12



Fold-glue each fin back-to-back

## Instructions



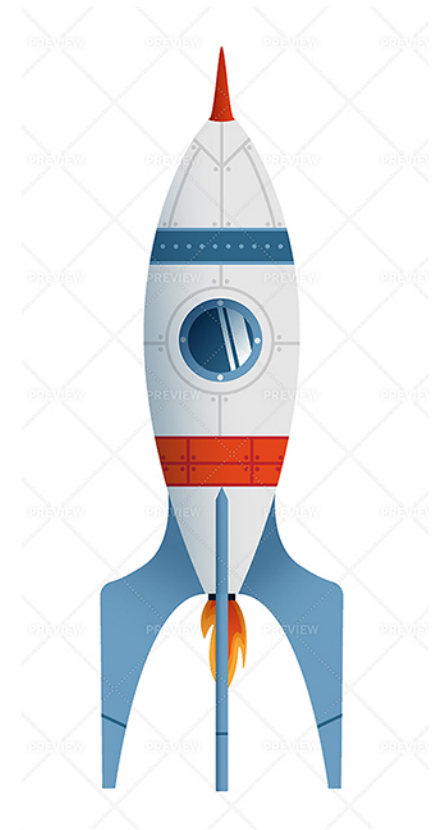
Feep all front lines and seems together

Glue 10 to the bottom of 9

Glue 11 onto 10

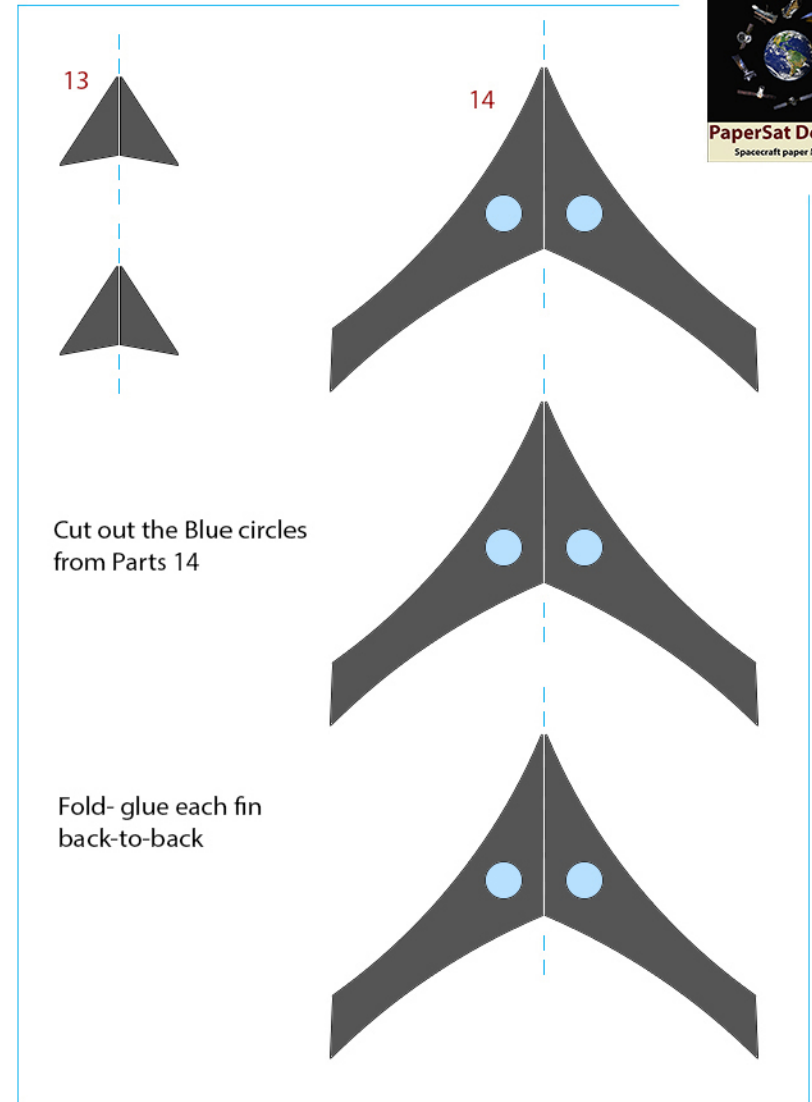
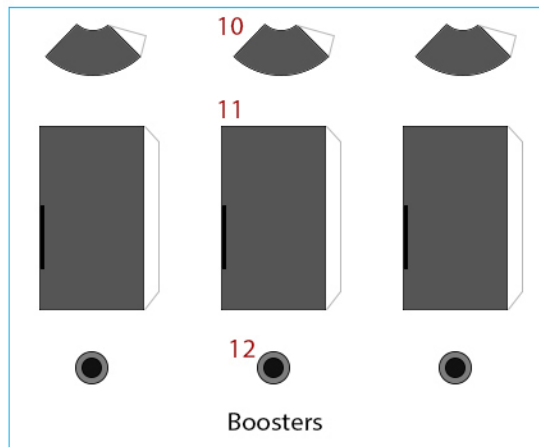
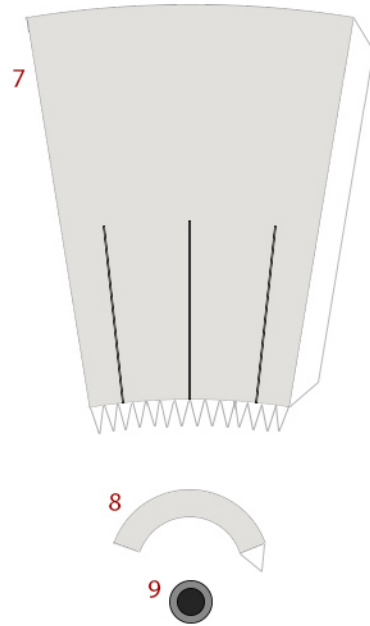
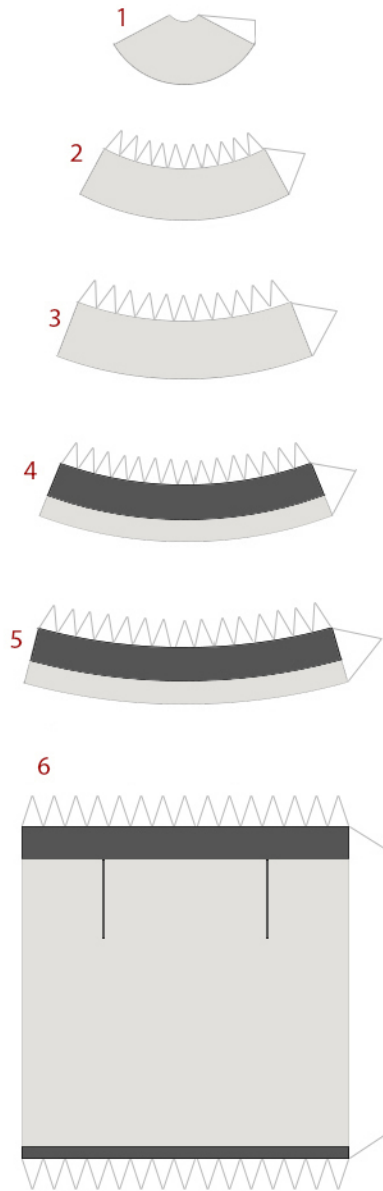
Score-fold and glue the fins (Part 12)  
back-to-back

Glue onto the blue lines as shown.

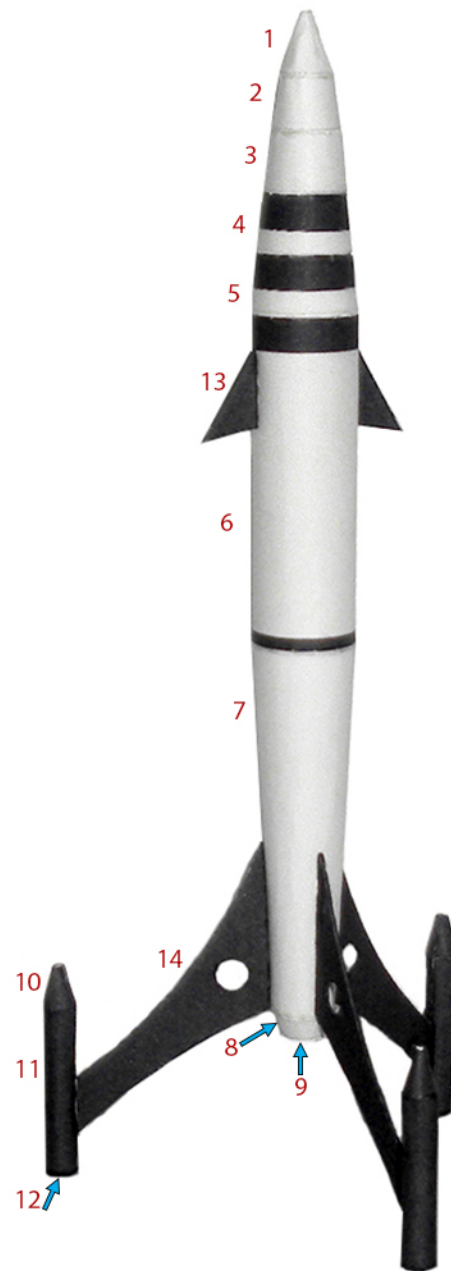




# Retro Rocket Ship 45



## Instructions



Keep all seems together

glue 9 to the bottom of 8

Glue 13 onto the black lines on 6

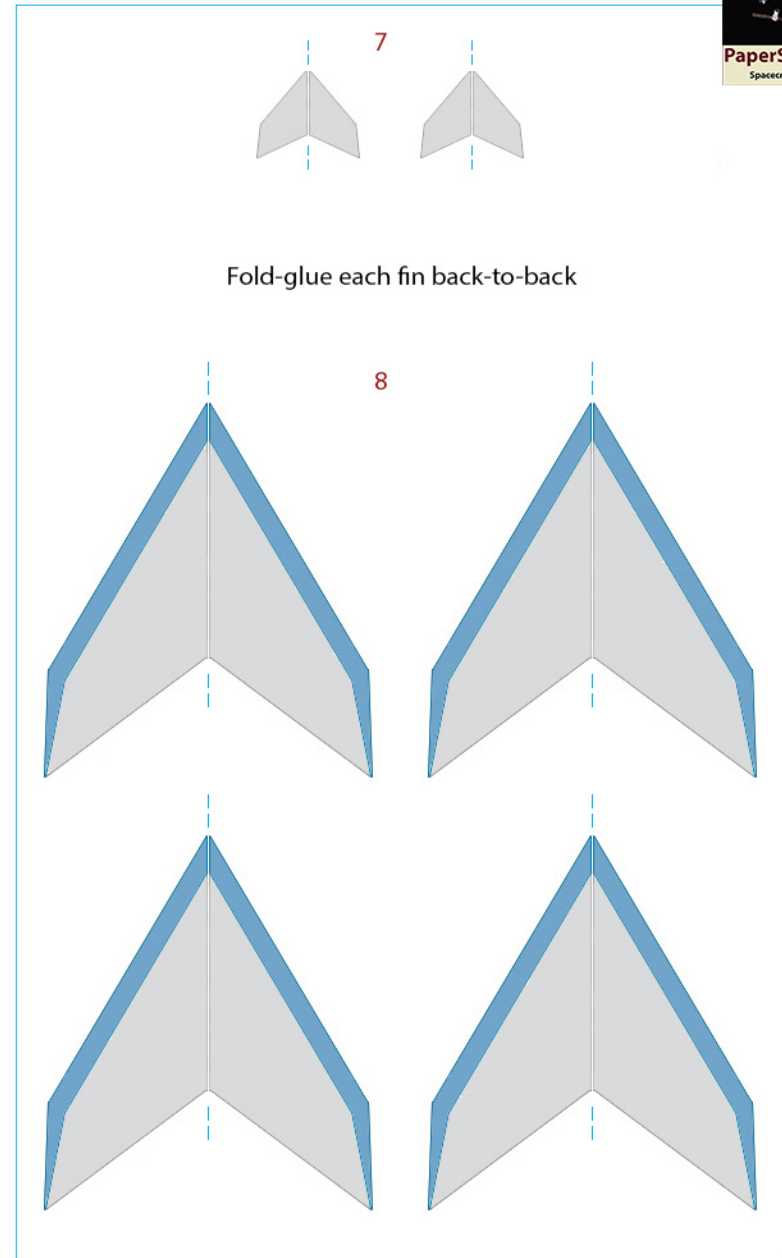
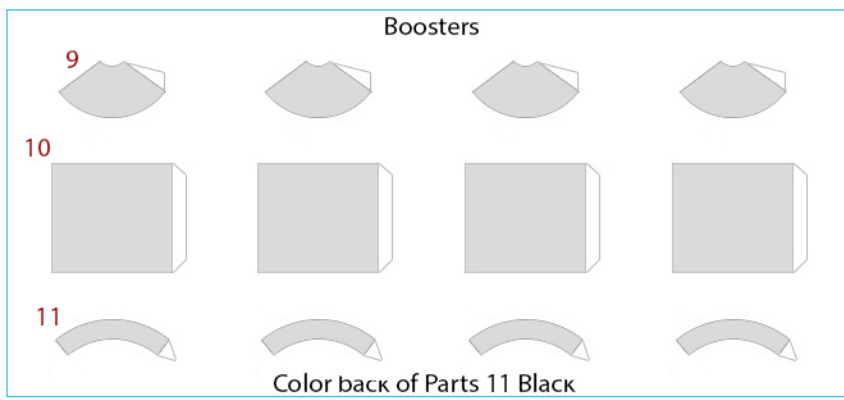
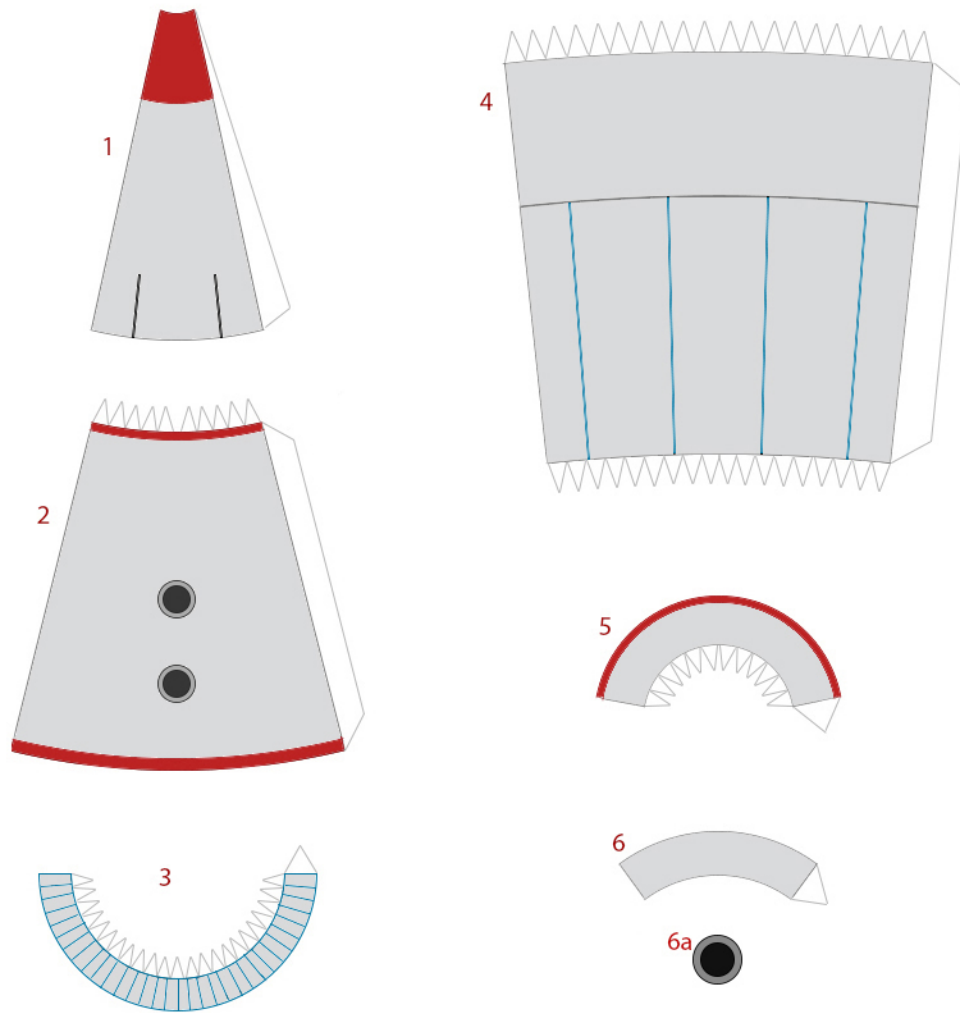
Cut out the blue areas from 14

Fold-glue the fins (Parts 14) back-to-back

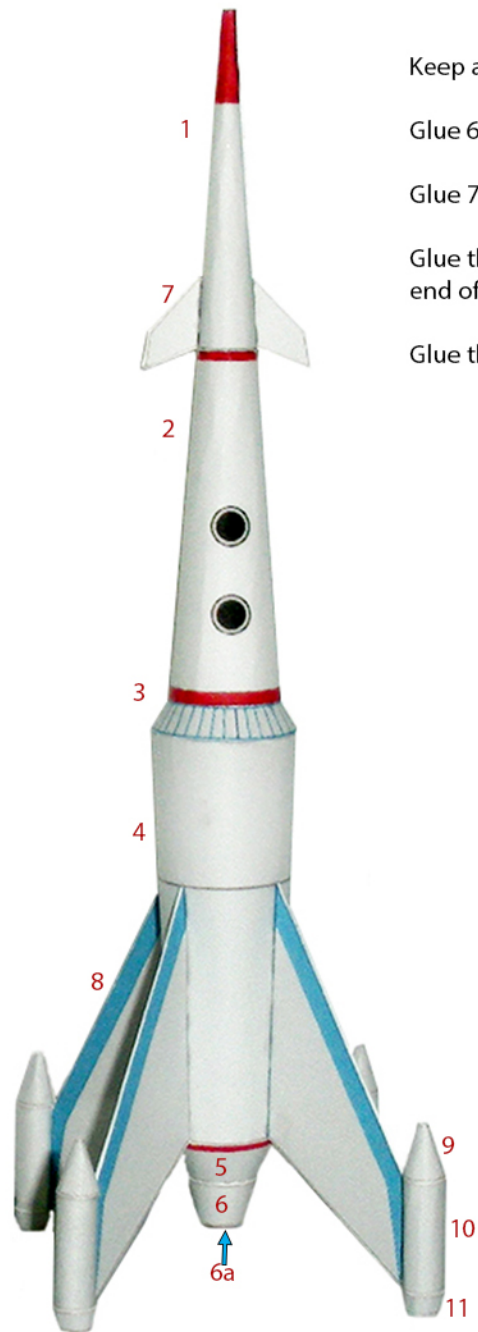
Glue the fins onto the boosters at the darker black line at the lower part of each booster.

Glue onto the three black lines on 7

# Retro Rocket Ship 46



## Instructions



Keep all seems together

Glue 6a to the bottom of 6

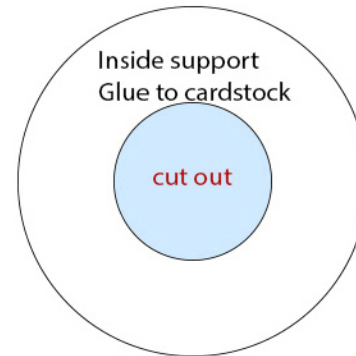
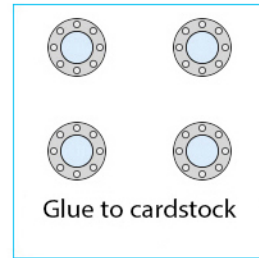
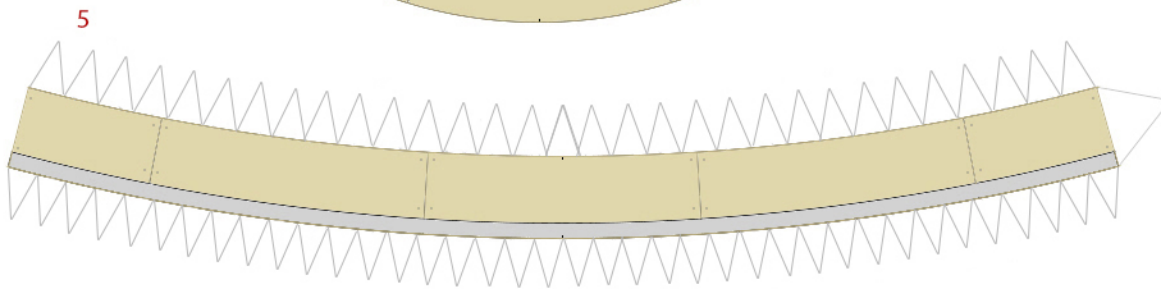
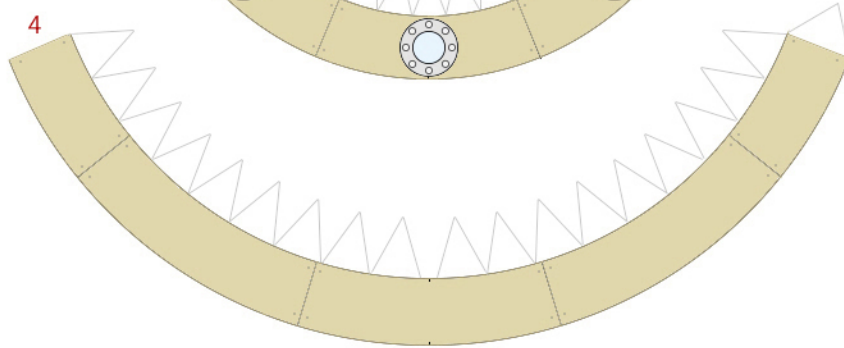
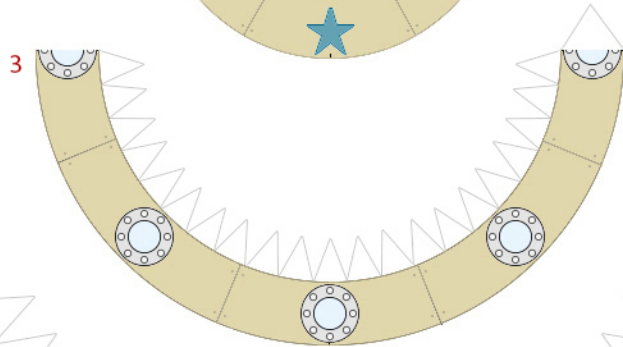
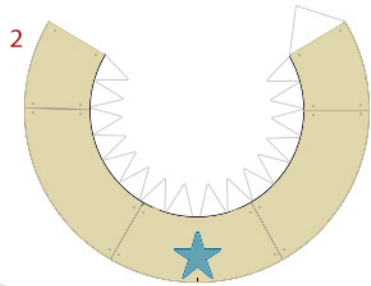
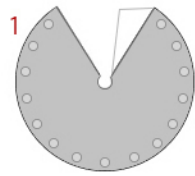
Glue 7 to the two black lines on 1

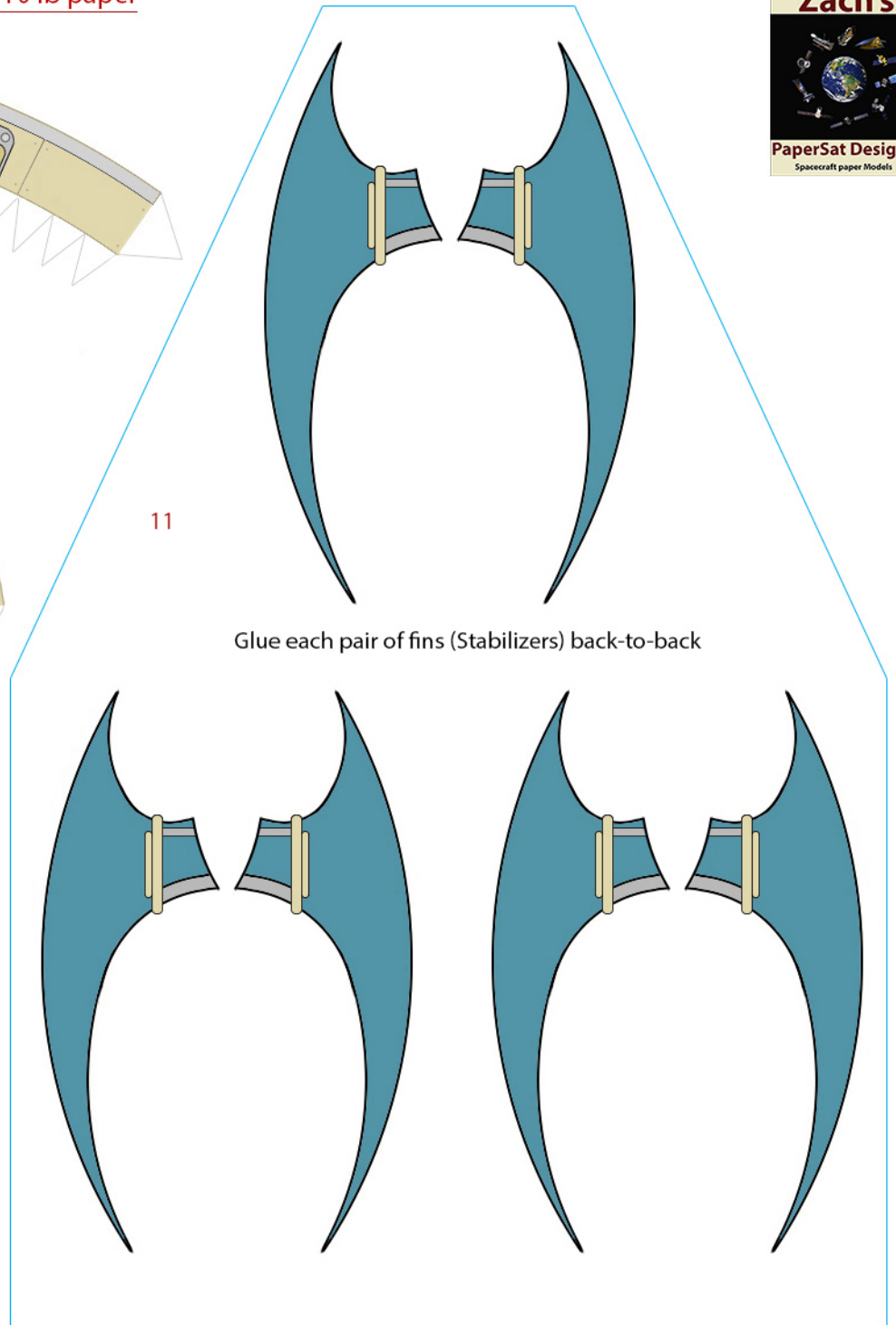
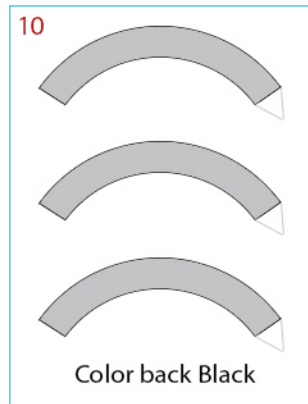
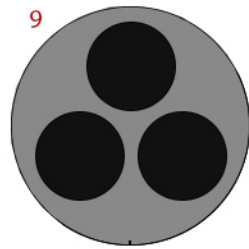
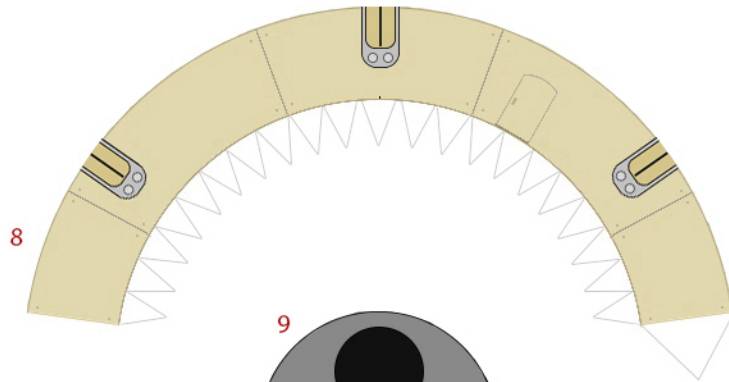
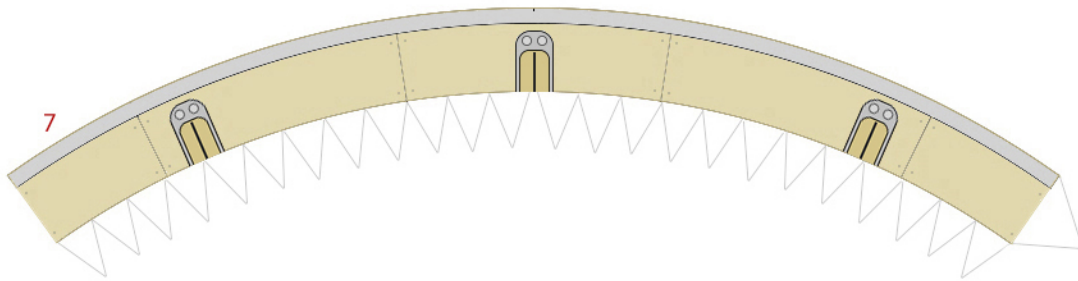
Glue the boosters (Parts 9 - 11) together and glue on the end of the fins (Parts 8)

Glue them to the blue lines on 4.



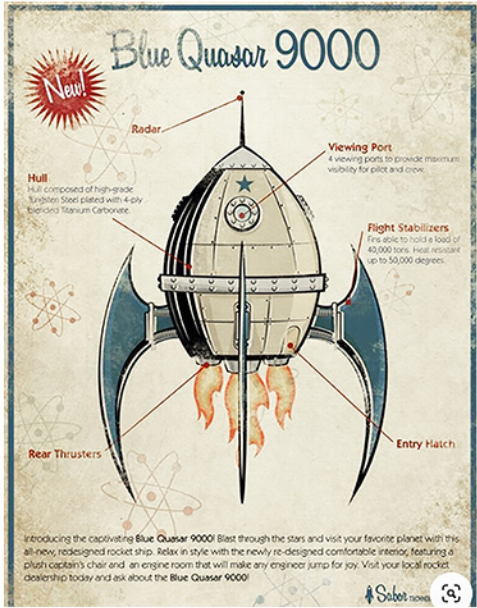
Cut plastic broom straw or thin music wire the same length as the line for the antenna - must be thin enough to fit inside the hole at the top of Part 1



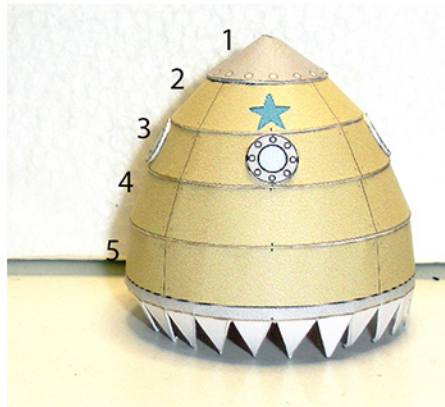




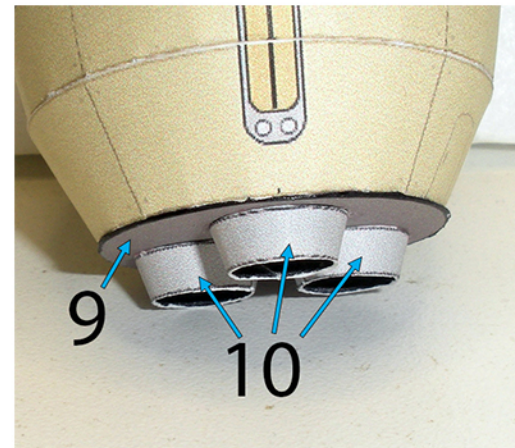
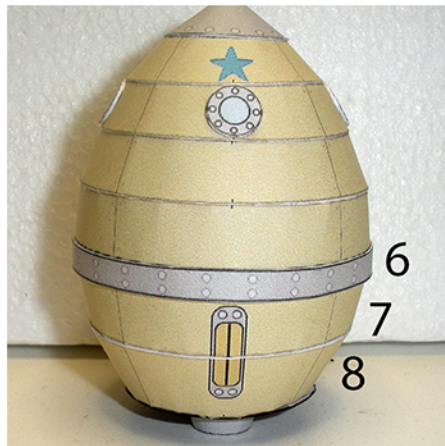
# Retro Rocket Ship 47



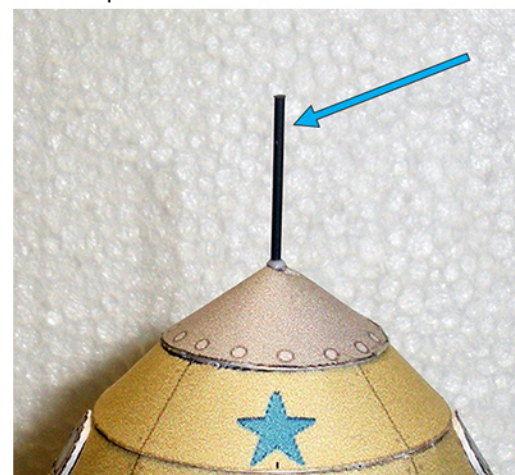
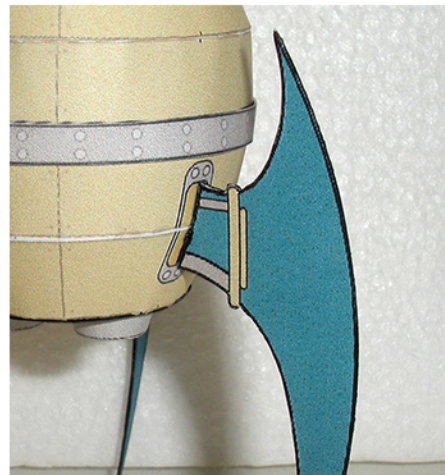
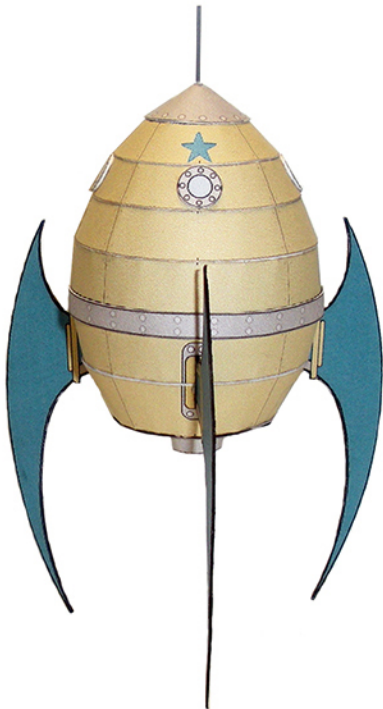
# Instructions



Align all seems in the backside and small markers at the front

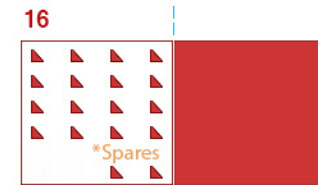
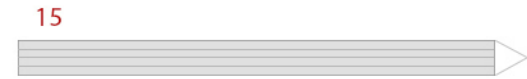
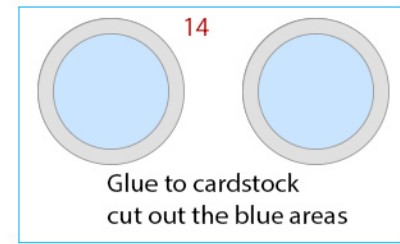
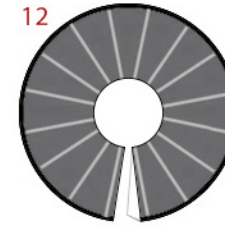
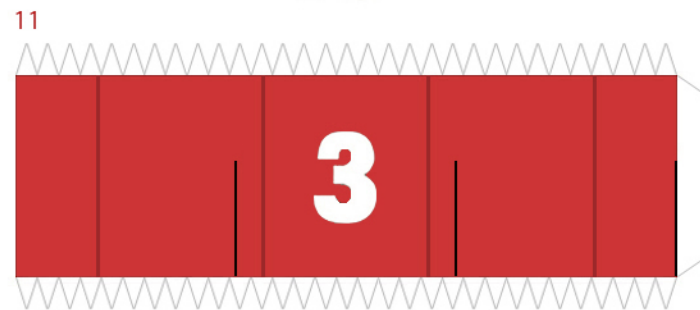
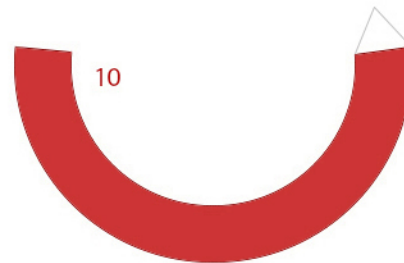
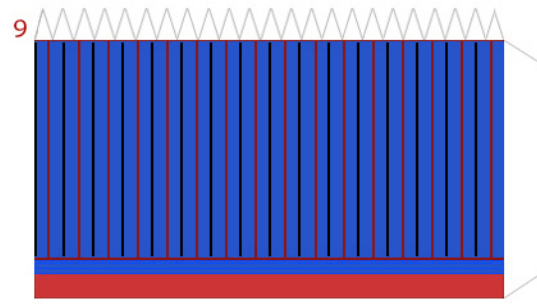
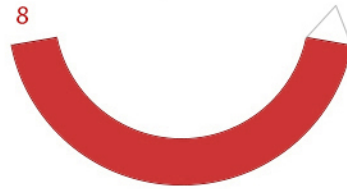
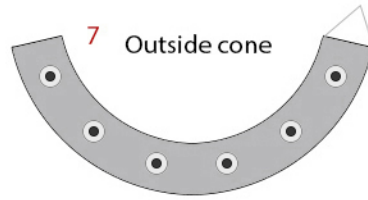
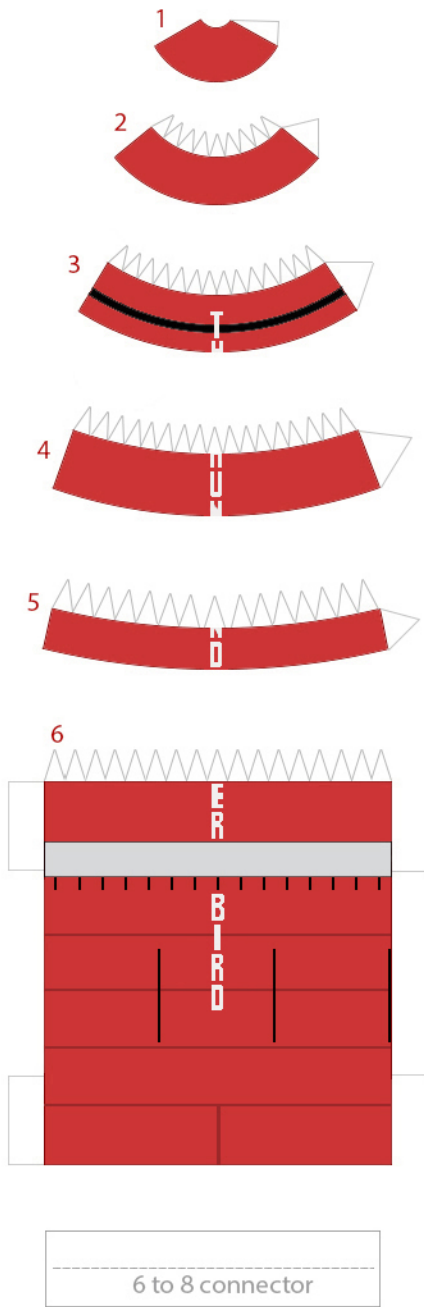


Match the small marker on 9 to the seem on part 8 at the bottom



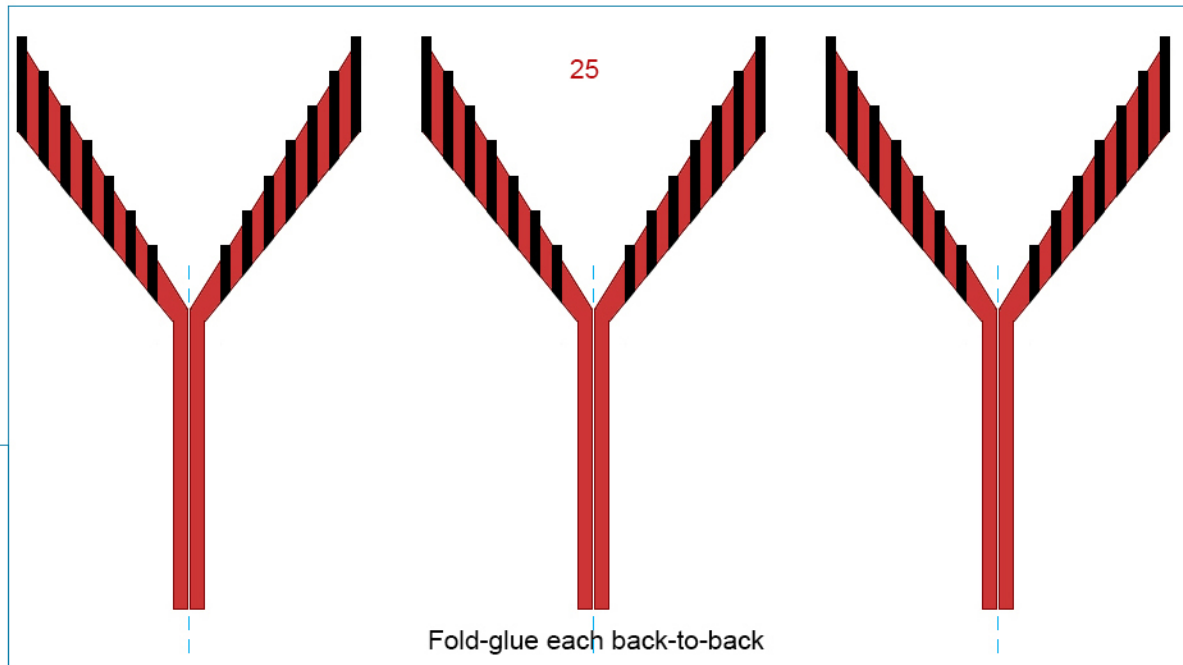
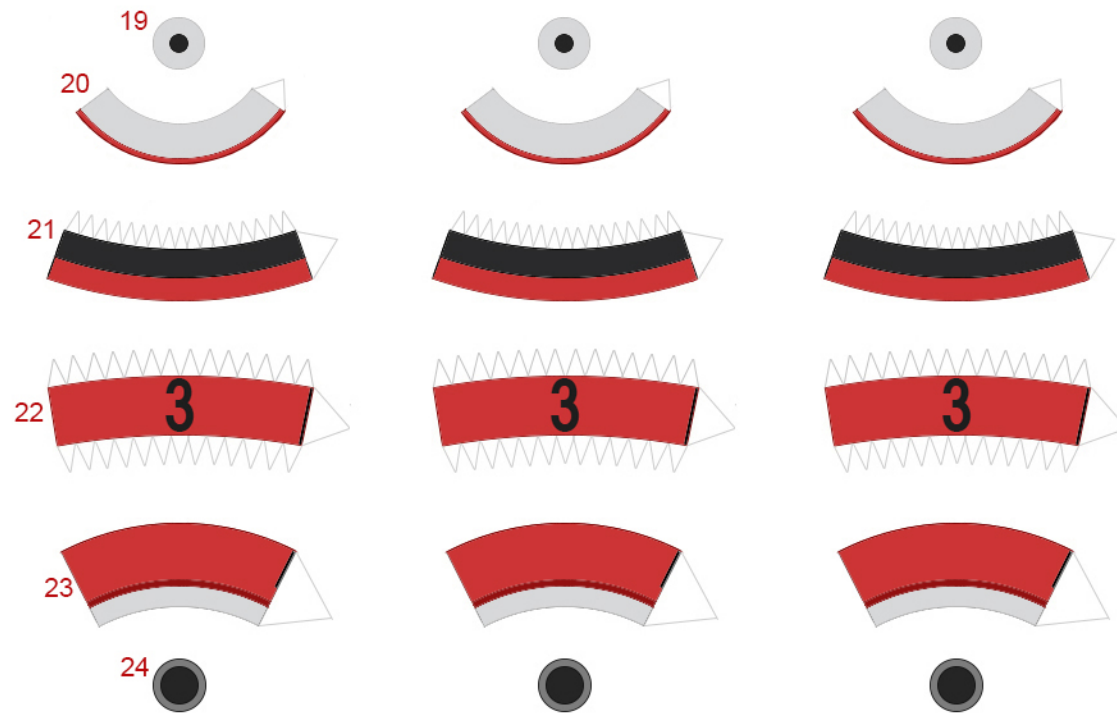
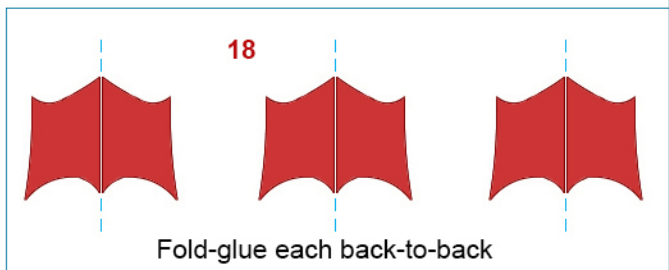
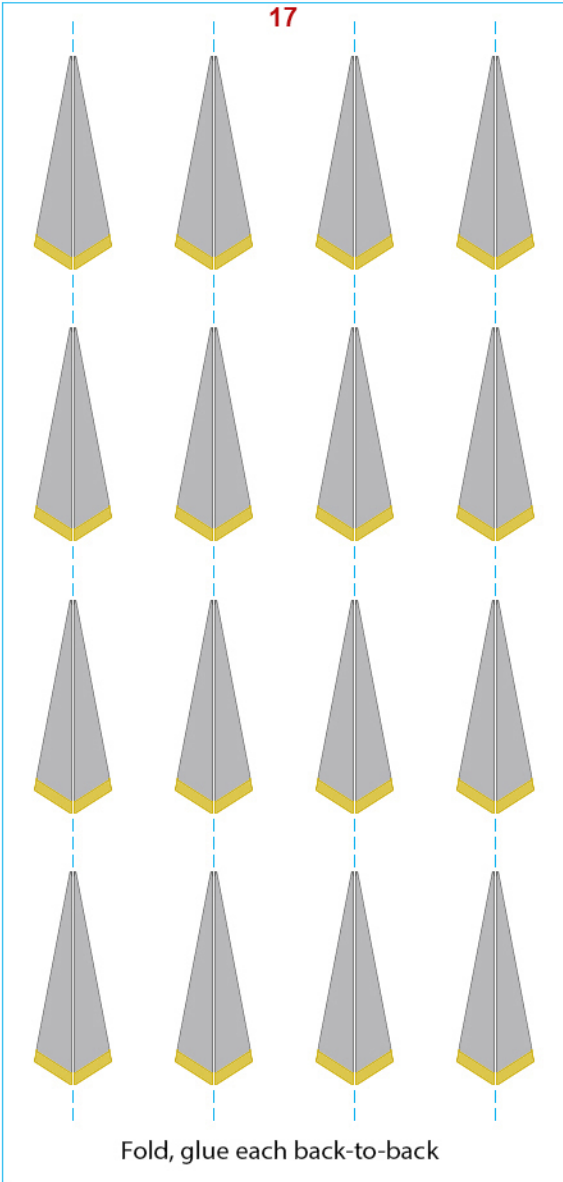
Prepare plastic broom straw or thin music wire according to instructions on the parts file.

Insert into the hole at the top just a little and glue in place.

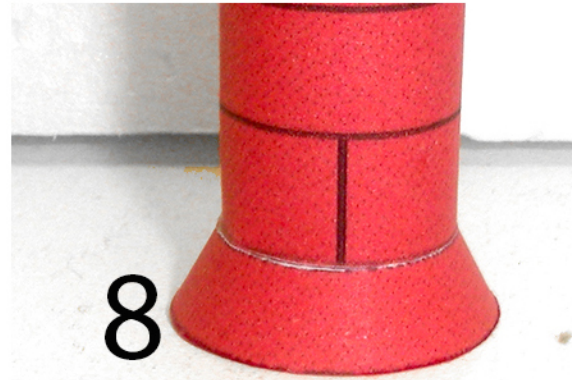
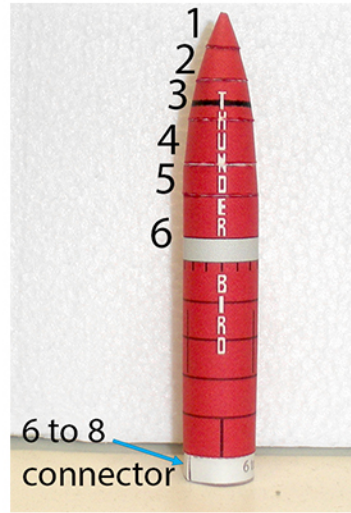
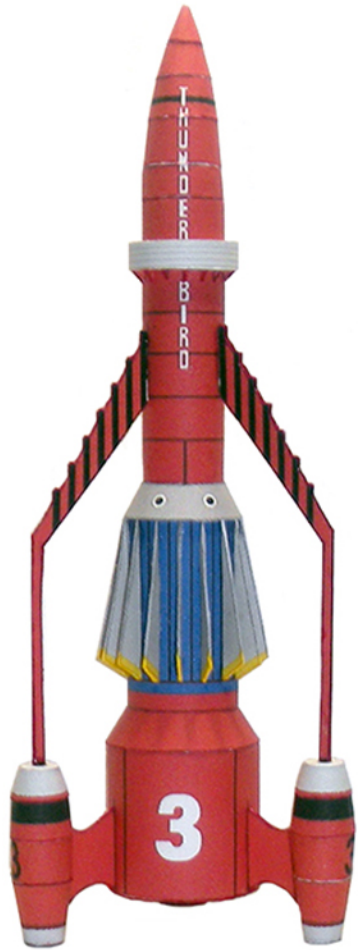


Optional - fold-glue back-to-back,  
cut out the triangles



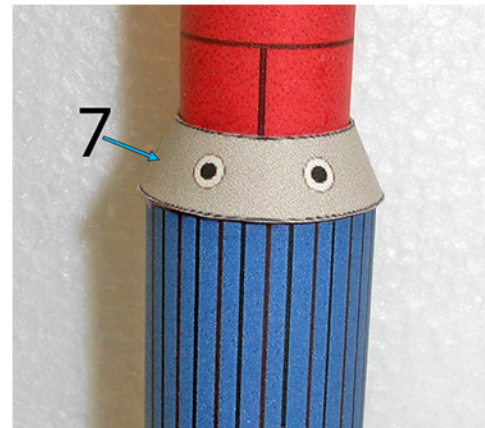
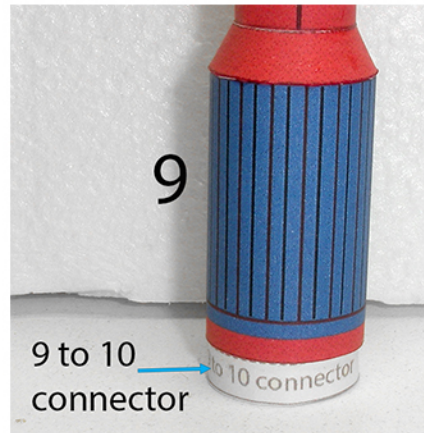




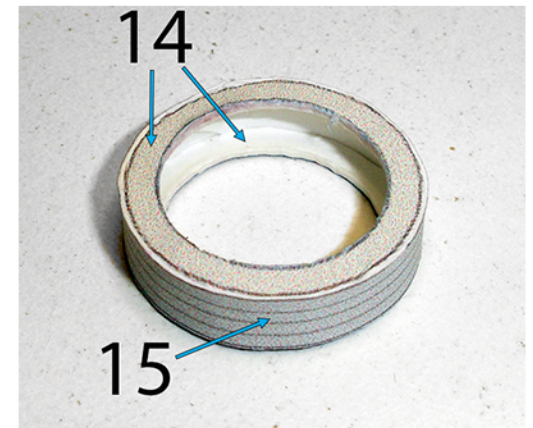


Glue onto the connector at the bottom of Part 6

Keep all seems together



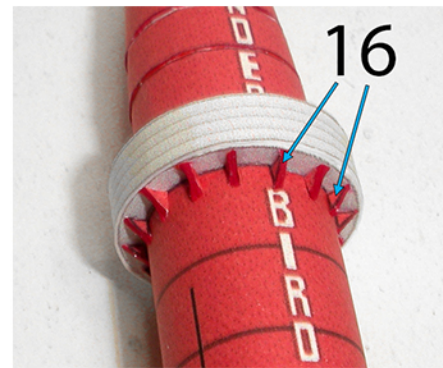
Slide over part 8 and glue on place



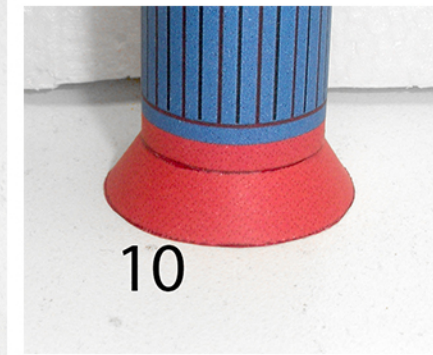
14 fits inside of 15 and glue in place at both sides of 15



Slide onto Part 6 over the grey strip and glue in place



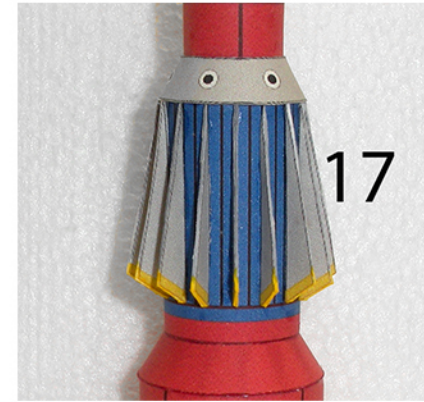
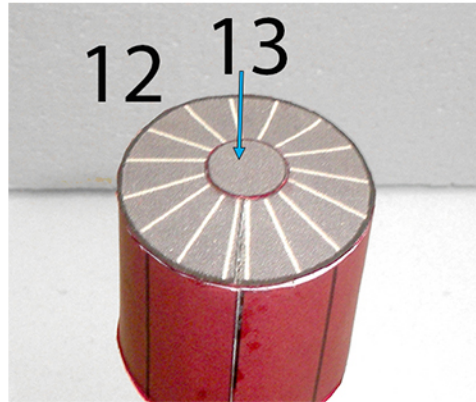
Glue onto the small black lines as shown



Glue onto the connector onto the bottom of Part 9



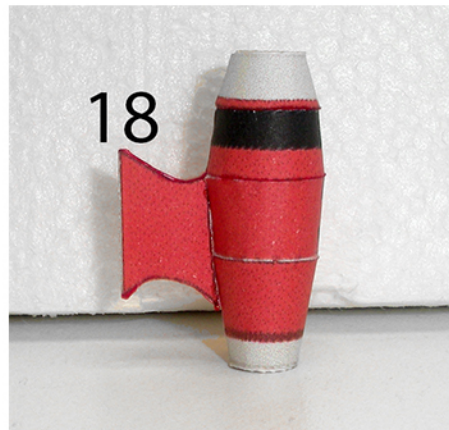
Keep all seems together



Glue Part 17 onto the BLACK lines



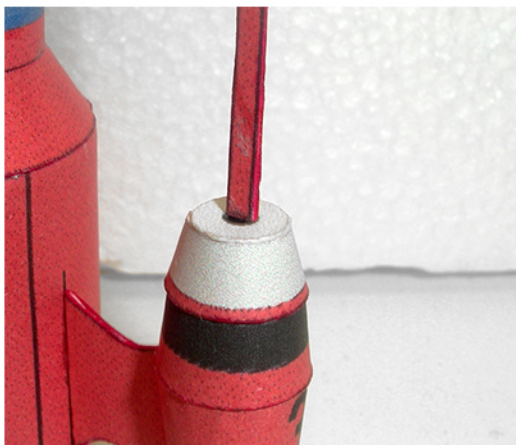
Boosters - Keep all seems together



Glue onto the thick black lines at the seems as shown



Glue onto the three (3) shorter black lines on the bottom as shown



Glue the bottom of Parts 25 onto the black circle at the top of each booster



Glue top of Parts 25 onto the short black lines onto Part 6 under Parts 14 - 16 as shown.



Your model is done