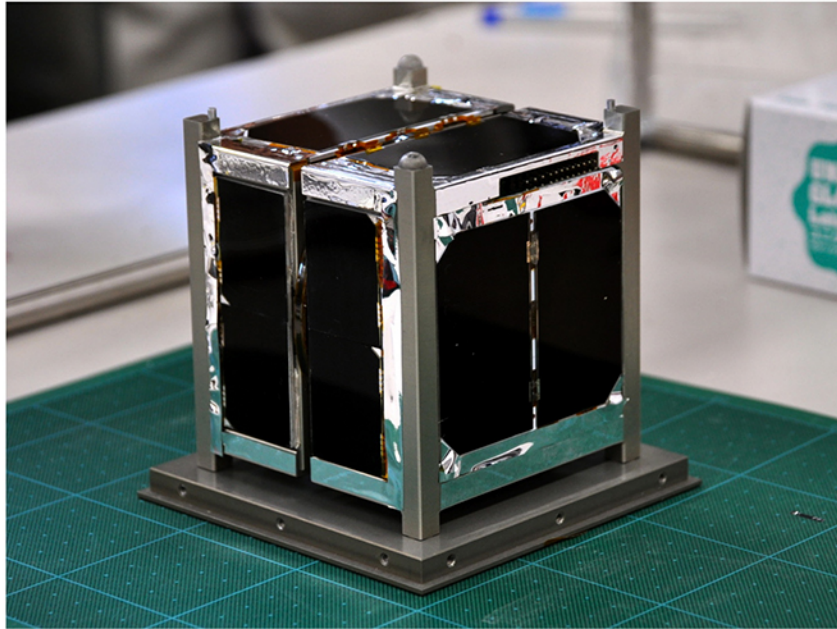


ArtSat-1



ARTSAT1: Invader (INteractiVe satellite for Art and Design Experimental Research), the world's first art satellite, blasted off into outer space on February 28, 2014.

The Invader is cube-shaped; each edge is 10 cm long. It weighs 1.85 kg. It's equipped with an Arduino-compatible computer that has enabled its ground control crew at Tama Art University in Tokyo to successfully carry out a series of artistic missions: the algorithmic generation and broadcast of synthetic voices, music and poetry, recording and transmitting image data, and communication with the ground control station by means of a chatbot program.

The ARTSAT project was also part of the mission of the [SPACE x ART] - Beyond Cosmologies exhibition at the Museum for Contemporary Art in Tokyo.

Berlin-based Japanese sound poet/performer/composer, Tomomi Adachi and Japanese Media Artist, Akihiro Kubota will send a program code to ART satellite ARTSAT1:INVADER, the satellite will interpret the code, perform a sound poem in the orbit with a voice synthesizer chip, and broadcast the voice directly to the earth by radio a few times in two weeks from June 21, 2014 (the solstice).

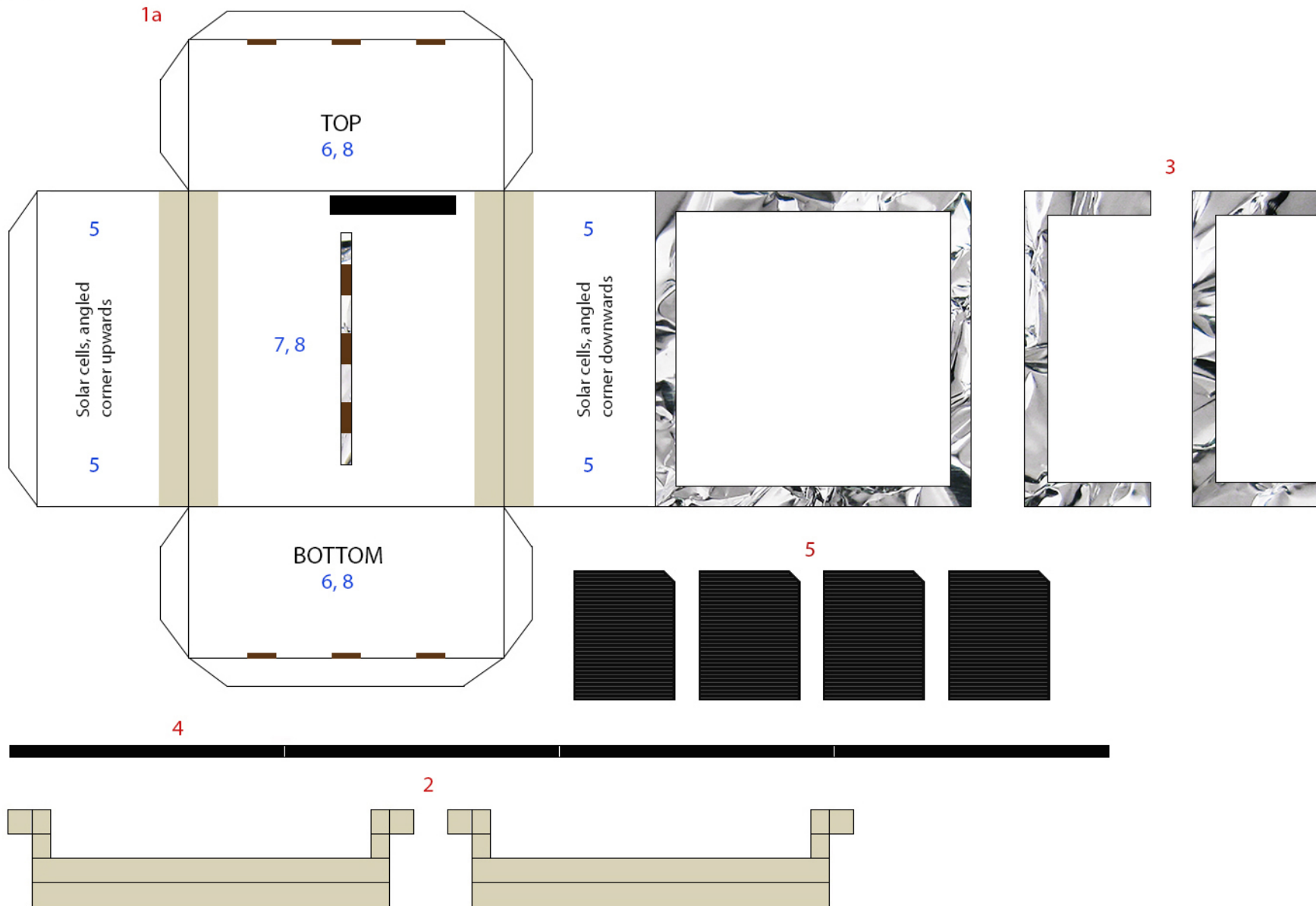
This poem is written as a program code for a computer on the satellite. The computer interprets the code each time, each performance is slightly different. In this respect, this performance is not so distant from a regular performance by humans.

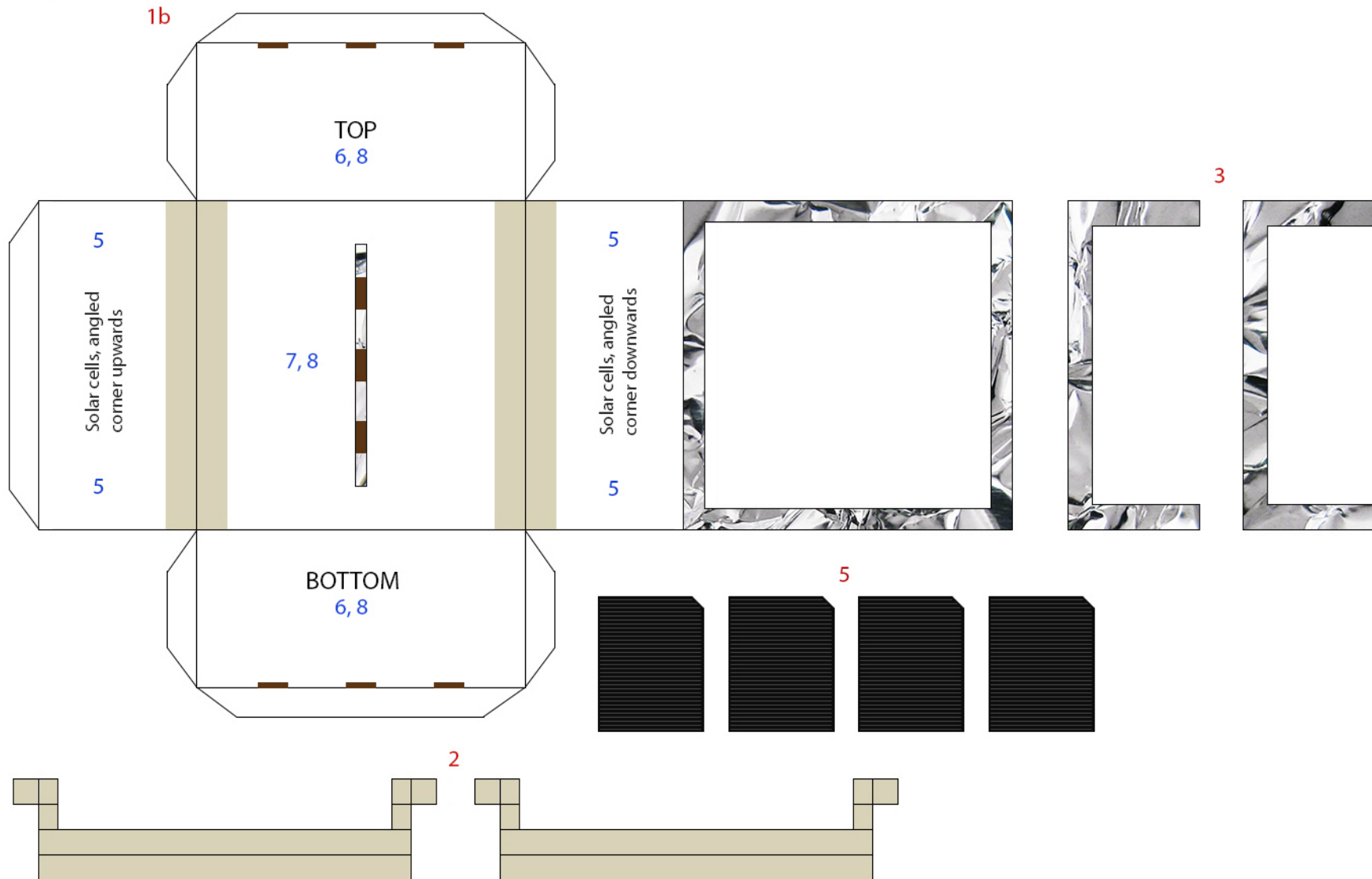
This cosmic poem could be the first experimental poetry/sound art practice in outer space.

Key Accomplishment for ARTSAT

- Award winning in Ars electronica 2015 for Award of Distinction (Silver Prize).
- Exhibited at MUSEUM OF CONTEMPORARY ART TOKYO and NTT InterCommunication Center [ICC].

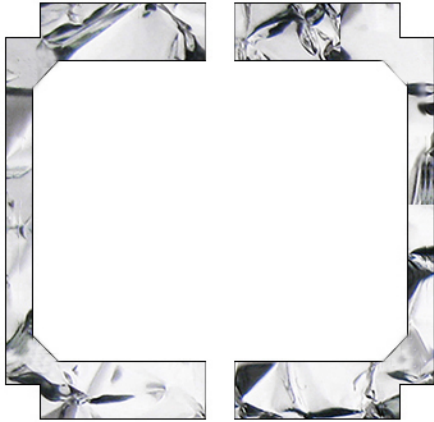






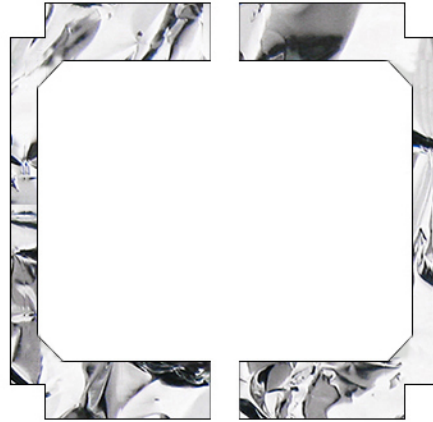
ArtSat-1

Top

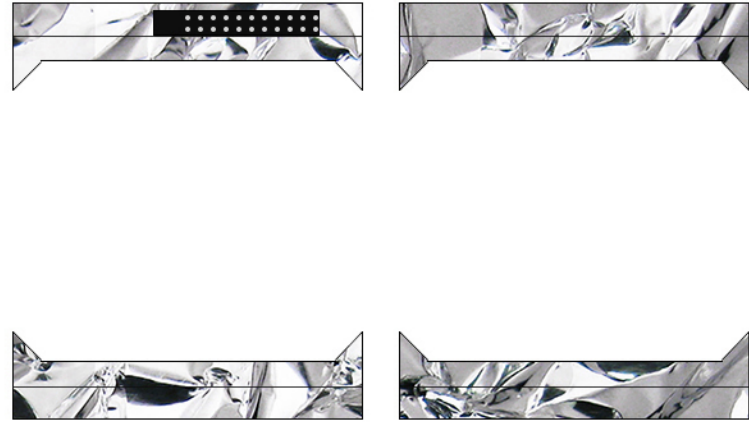


6

Bottom



7



8



Antennas, fold-glue in half back-to-back for color on both sides.

